

# Stone-Feel Pavement®

High-Tech 100% concrete recycled aggregates

Reconstructed concrete, cement, fibers, organic additives.



## Product

- Continuous pavement polished finish.
- Public and private construction.
- Thicknesses >14 mm.
- Quick operating disposal.
- Color range.

## Observations

Do not apply:

- On outdoor floors
- Over supports with humidity >4%.
- With ambient humidity >85%
- Over wet floors subjected to continuous humidity rising.
- On degrading, fragile or unstable floors.
- Over heating floor on service, stop the heating 24 hours before and turn it on after at least 21 days once the works, following gradually the startup protocol.
- Over mortars calcium sulfate and lime base.

## Characteristics

- Kneading and transport by pumping.
- Mass life: 10- 20 minutes.
- Setting start: ±45 minutes.
- Dry touch: 5 a 7 hours.
- Passable (pedestrian): > 10 hours.
- Time for dry polish: >4 days.

*\* These results are contemplated with 20oC and they can oscillate depending on the ambient temperature.*

## Performances (10 mm)

- Kneading water (in laboratory): 12 %
- Bending resistance:  $\geq 9$  N/mm<sup>2</sup>
- Compression resistance:  $\geq 50$  N/mm<sup>2</sup>
- Wastage UNE-EN 13892-4: 18 cm<sup>3</sup> / 50 cm<sup>2</sup>
- Abrasion wear:  $\leq 21$ mm
- Slip resistance according to CTE: Class 1
- Adherence over concrete:  $\geq 1,5$  N/mm<sup>2</sup>
- Adherence over nonabsorbent support with joining bridge:  $\geq 0,9$  N/mm<sup>2</sup>
- Impact resistance, UNE-EN 12633;
  - \*\*Height of fall: >1500 mm
  - \*\*Value IR: IR=14,7 N-m
- Behavior against fire: A1 Euroclass
- Designation: EN 13813:2003 - CT-C40-F7-A21

*\*\* These results are from standard essays and can oscillate depending on the workplace conditions.*

## Enforcements

- Fluid concrete based on recycled aggregates for the continuous floor formation, on new construction or rehabilitation.
- For floor where a high planimetry is required.
- Public construction, great surfaces, hotels, private construction...
- Industrial floors renovation.
- Light traffic and moderated heavy traffic.
- Indoors

## Supports

- Mortars and concretes, of high resistance to the compression (> 25 N/mm<sup>2</sup>).
- Over supports with humidity <4%.

## Thicknesses

- >14mm (according grain size) in every point.

## Finish

- Polished.

## Recommendations

- Application temperatures 5°C to 30°C.
- The water percentage can oscillate depending on the used mixer.
- Respect always the same time and water percentage during the kneading.
- Do not add any additive to the concrete.
- Respect the minimum thicknesses required depending on the kind of support.
- Respect perimeter joint (min. 5 mm), expansion and division joint.

## Execution conditions

- The support has to be solid and hard, dry, without dust, degrading zones, painting, oils...
- Do not apply over fissured concretes, degrading or with movement possibilities.
- Always, over new concrete (setting > 28 days) or old and compression > 25 N/mm<sup>2</sup>, mill the superficial layer until the aggregate appears and apply the **Pavex primer system**.
- In all substrates, with or without absorption (concrete, mortar, ceramics, marble...), milling, aspirating and applying the **Pavex Primer System**.
- Over weak cement bases and without guarantees, mill until the arid appearance, vacuum and reinforce with **Silicato hardener**. If necessary, before pouring, apply 1-2 coats of quick primer **F-300**.
- Respect the expansion joints, work joints, through a cut or profile placement.
- Avoid direct insolation, air streams, during the application and 72 hours after.

# Stone-Feel Pavement®

High-Tech 100% concrete  
recycled aggregates

## Usage way

Kneading water according grain size: 12-14%. (1 sack 25 kg + aggregates).

*\* The dosage may vary considerably depending on the intensity of the chosen color and size distribution of the aggregate.*

If necessary, use the spiked roll to eliminate the occluded air in the mass and obtain a better levelling.

Dry polished: >4 days.

*\*\* These times can oscillate depending on the ambient temperature.*

**Important:** Perform always a previous essay with the water percentage that is going to be used in production afterwards.

## Associated products

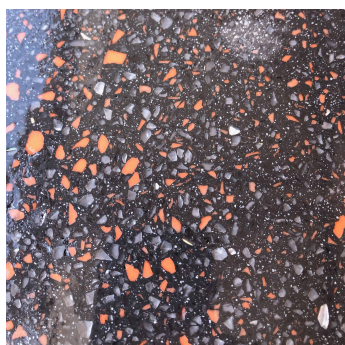
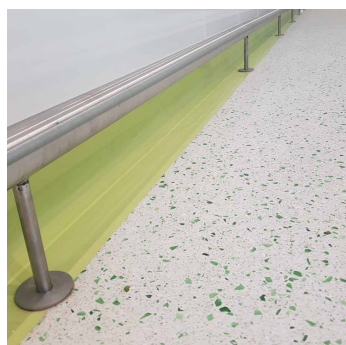
\*Pavex-2C primer

\*F-300

\*Hydrofugant 6772

\*HO-sealant

\*Silicate



## Packaging

25 kg paper sacks  
Aggregates according percent  
1200 kg pallet (48 sacks)

## Colors

14 colors range  
(Other on demand)

## Consumption

18-22 kg/m<sup>2</sup> and cm thickness  
(aggregate according to particle size)

## Preservation

In the closed original container and sheltered from  
outdoor and humidity: 6 months

## ⚠ IMPORTANT

The observations and prescriptions of this data sheet, although corresponding to our best experience, should be considered, in any case, purely indicative, and should be tested by exhaustive practical applications; therefore, before using the product, the user must establish whether or not it is suitable for the intended use, and assumes all liability that may arise from its use. Once the product has been handled or applied, the manufacturer shall not assume any claim whatsoever, nor any liability as to the manner, mode and conditions of application.