

Stylfloor Pavement®

Colored fluid concrete polished finish

Cement, marble aggregates, glass, quartz sand, fibers, mineral additives.



Product

- Continuous pavement polished finish.
- Quick operating disposal.
- Thickness from >12 mm.
- Color range.
- Indoors.

Observations

Do not apply:

- On outdoor floors
- Over supports with humidity >4%.
- With ambient humidity > 85%.
- Over wet floors subjected to continuous humidity rising.
- On degrading, fragile or unstable floors.
- Over lime base mortars (calcium sulfate)
- Over heating floor on service, stop the heating 24 hour before and turn it on after at least 21 days once the works, following gradually the startup protocol.

Characteristics

- Kneading and transport by pumping.
- Mass life: 10-20 minutes
- Setting start: 45 minutes
- Dry touch: 5-7 hours
- Passable (pedestrian): > 10 hours
- Time for dry polish: >4 days.

** These results are contemplated with 20°C and they can oscillate depending on the ambient temperature.*

Performances (10 mm)

- Kneading water (in laboratory): 14 %
- Bending resistance (28 days): ≥ 10 N/mm²
- Compression resistance (28 days): ≥ 40 N/mm²
- Wastage Böhme UNE-EN 13892-3 : ≤ 18 cm³/50 cm²
- Wastage UNE-EN 13748-1: ≤ 21 mm
- Adherence over concrete: >1,3 N/mm²
- Adherence over nonabsorbent support with joining bridge: >0,9 N/mm²
- Impact resistance, UNE-EN 12633;
 - **Height of fall: >1500 mm
 - **Value IR: IR=14,7 N·m
- Behavior against fire: A1 euroclass
- Designation: EN 13813: CT- C40- F10- A21

*** These results are from standard essays and can oscillate depending on the workplace conditions.*

Enforcements

- Fluid and colored concrete for decorative floors construction adhered on new construction or rehabilitation.
- Public construction, great surfaces, hotels...
- For floor where a high planimetry is required.
- Light traffic and moderated heavy traffic.
- Indoors.

Supports

- Mortars and concretes, with high compression resistance (> 25 N/mm²).
- Over supports with humidity <4%.

Thicknesses

- Advisable from >12mm (in every point)

Finish

- Polished.

Recommendations

- Application temperatures 5°C to 30°C.
- The water percentage can oscillate depending on the used mixer.
- Respect always the same time and water percentage during the kneading.
- Do not add any additive to the concrete.
- Respect the minimum thicknesses required depending on the kind of support.
- Respect, perimeter joint (min. 5 mm), expansion and division joint.

Execution conditions

- The support has to be solid and hard, dry, without dust, degrading zones, painting, oils...
- Do not apply over fissured concretes, degrading or with movement possibilities.
- On substrates without absorption (marble, granite, etc.), mill, vacuum and apply the **Pavex primer system**.
- Always, over new concrete (setting > 28 days) or old and compression > 25 N/mm², mill the superficial layer until the arid appearance and apply the **Pavex primer system**.
- On weak and unsecured cementitious bases, mill until the aggregate appears, vacuum and reinforce with **Silicato hardener**.
- If necessary, before pouring, apply 1-2 coats of **F-300** rapid primer.
- Respect the expansion joints, workjoints, through a cut or profile placement.
- Avoid direct insolation, air streams, during the application and 72 hours after.

Stylfloor Pavement®

Colored fluid concrete
polished finish

Usage way

Kneading water according grain size: 12-14%.
(1 sack 25 kg + aggregates)

** The dosage may vary considerably depending on the intensity of the chosen color and size distribution of the aggregate.*

If necessary, use the spiked roll to eliminate the occluded air in the mass and obtain a better leveling.

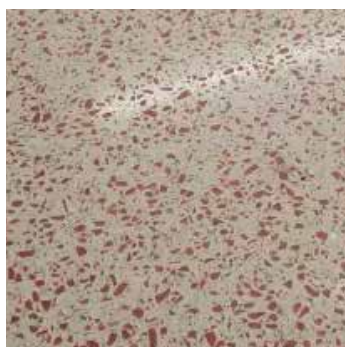
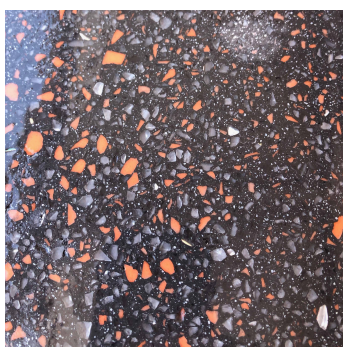
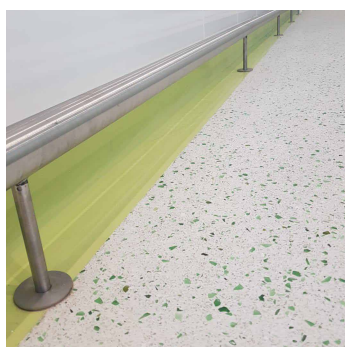
Dry polished: >4 days.

*** These times can oscillate depending on the ambient temperature.*

Important: Perform always a previous essay with the water percentage that is going to be used in production afterwards.

Associated products

- *F300
- *Pavex-2c primer
- *Hydrofugant 6772
- *HO-sealant
- *Silicate



⚠ IMPORTANT

The observations and prescriptions of this data sheet, although corresponding to our best experience, should be considered, in any case, purely indicative, and should be tested by exhaustive practical applications; therefore, before using the product, the user must establish whether or not it is suitable for the intended use, and assumes all liability that may arise from its use. Once the product has been handled or applied, the manufacturer shall not assume any claim whatsoever, nor any liability as to the manner, mode and conditions of application.

STYLFLOOR PAVIMENTO®

HORMIGÓN FLUIDO COLOREADO
ACABADO PULIDO
12 MM (ESPESOR)

Pavistamp®

Packaging

25 kg paper sacks
Aggregates according percent
1200 kg pallet (48 sacks)

Colors

14 colors range
(Others on demand)

Consumption

16-20 kg/m² and cm thickness
(aggregate according to particle size)

Preservation

In the closed original container and sheltered from
outdoor and humidity: 6 months