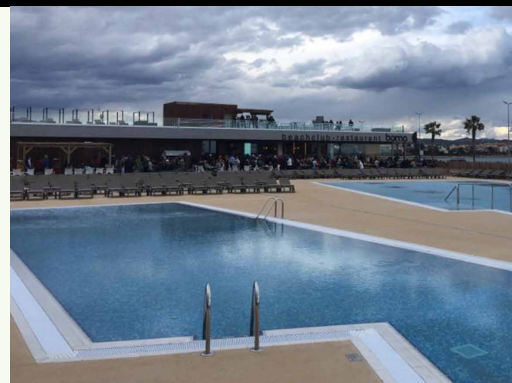


# Terrazo Industrial®

Colored fluid concrete with aggregates

Cement, marble arid aggregates, granite, glass fibers, organic additives and minerals.



## Product

- Polished/Bush-hammered pavement finish.
- Fresh on fresh.
- Thickness from >15 mm.
- Quick operating disposal.
- Color range.

## Observations

Do not apply:

- With ambient humidity >85%, with direct insolation and extreme temperatures.
- In different thicknesses.
- Over fresh resistance concrete < 250 kg/cm<sup>2</sup>.
- Over wet floors subjected to continuous humidity rising
- Over mortars calcium sulfate and lime base.

## Characteristics

- Kneading: concrete mixer.
- Mass life: 30-45 minutes.
- Setting start: same as a concrete.
- Dry touch: > 3 hours.
- Passable (pedestrian): >10 hours.
- Time for dry polish: >24 hours.
- The water percentage can oscillate depending on the used mixer.

*\* These results are contemplated with 20oC and they can oscillate depending on the ambient temperature.*

## Performances

- Kneading water (in laboratory): 17 %
- Bending resistance:  $\geq 9$  N/mm<sup>2</sup>
- Compression resistance:  $\geq 50$  N/mm<sup>2</sup>
- Wastage UNE-EN 13892-4: 18 cm<sup>3</sup> / 50 cm<sup>2</sup>
- Abrasion wear:  $\leq 21$  mm
- Slip resistance according to CTE;
  - \*\*Polished finish: Class 1
  - \*\*Bush-hammered finish: Class 3
- Adherence over concrete: > 1,5 N/mm<sup>2</sup>
- Impact resistance, UNE-EN 12633;
  - \*\*Height of fall: >1500 mm
  - \*\*Value IR: IR=14,7 N·m
- Behavior against fire: A1 Euroclass
- Designation: EN 13813:2003 - CT-C40-F7-A21

*\*\* These results are from standard essays and can oscillate depending on the workplace conditions.*

## Applications

- Fluid concrete based on marble aggregates, granite, glass... for the continuous floor formation over fresh concrete, on new construction or rehabilitation.
- For floor where a high planimetry is required.
- Public construction, great surfaces, hotels, private construction...
- Renovation of industrial floors, industry, sport courts, skating rinks...
- Light traffic and moderated heavy traffic.
- Indoors and outdoors.

## Supports

- Over fresh concrete (fresh on fresh).

## Thicknesses

- Advisable >15 mm over fresh concrete.
- System minimum thickness (concrete + finish): 8 cm in every point.

## Finish

- Polished – Bush-hammered.

## Recommendations

- Application temperatures 5°C to 30°C.
- Respect always the same time and water percentage during the kneading.
- Do not add any additive to the concrete.
- Respect the minimum thicknesses required depending on the kind of support.
- Respect, perimeter joint (min. 5 mm), expansion and division joint.

## Execution conditions

- The support in order to receive the concrete has to be solid and hard, dry, without dust, degrading zones, painting, oils...
- The fresh concrete has to have a good flatness and has to be without water and slag raise by capillarity.
- In interiors, poured on fresh concrete of resistance:  $\geq 200$  kg/cm<sup>2</sup> and reinforced with 3 kg/m<sup>3</sup> of fiberglass.
- Outdoors, poured on fresh concrete of resistance:  $\geq 250$  kg/cm<sup>2</sup> and reinforced with 3 kg/m<sup>3</sup> of Fiberglass. Avoid the fresh concretes pilt with ponded water.
- Do not proceed the spilt over fresh concrete with excess of additives, fluid agents...
- Avoid coating application with low temperatures, direct insolation, strong wind, humidity, rain or frost possibility.
- Dispose always from awnings if it is necessary in the event of rain or direct insolation.
- Respect the expansion joints, workjoints, through a cut or profile placement.

# Terrazo Industrial®

Colored fluid concrete with aggregates

## Usage way

Kneading water according grain size: 16-18%.  
(1 sack 25 kg + aggregates)

*\* The dosage may vary considerably depending on the intensity of the chosen color and size distribution of the aggregate.*

*Spilt and leveling of Terrazo Industrial over fresh concrete.*

Dry polished: >24 hours.

*\*\* These times can oscillate depending on the ambient temperature.*

**Important:** Perform always a previous essay with the water percentage that is going to be used in production afterwards.

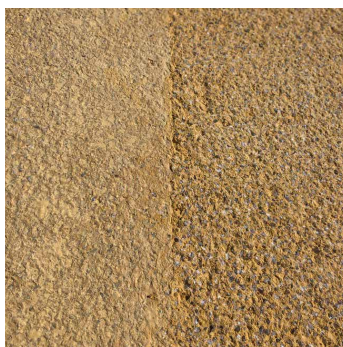
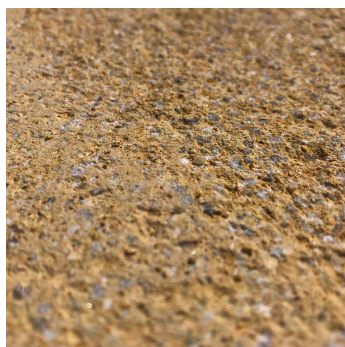
## Associated products

\*Hydrofugant 6772

\*HO-sealant

\*Silicate

\*F-300



## Packaging

25 kg sack  
Aggregates according percent  
1200 kg pallet (48 sacks)

## Colors

14 colors range  
(Others on demand)

## Consumption

18-22 kg/m<sup>2</sup> and cm thickness  
(aggregate according to particle size)

## Preservation

In the closed original container and sheltered from outdoor  
and humidity: 6 months

## ⚠ IMPORTANT

The observations and prescriptions of this data sheet, although corresponding to our best experience, should be considered, in any case, purely indicative, and should be tested by exhaustive practical applications; therefore, before using the product, the user must establish whether or not it is suitable for the intended use, and assumes all liability that may arise from its use. Once the product has been handled or applied, the manufacturer shall not assume any claim whatsoever, nor any liability as to the manner, mode and conditions of application.