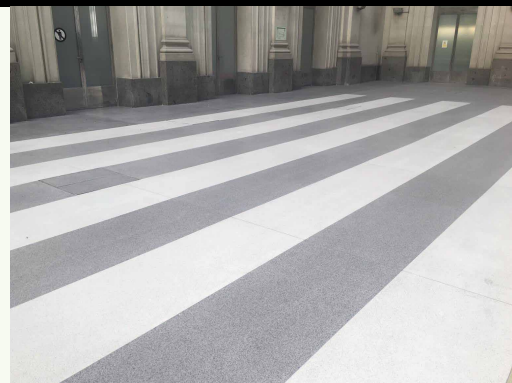


Terrazo Pavement®

Colored concrete with aggregates

Cement, marble arid aggregates, glass, granite, fibers, organic additives and minerals.



Product

- Continuous pavement polished finish.
- Public and private construction.
- Thickness from >15 mm.
- Quick operating disposal.
- Color range.

Observations

Do not apply:

- On outdoor floors
- Over supports with humidity >4%.
- With ambient humidity >85%
- Over wet floors subjected to continuous humidity rising.
- On degrading, fragile or unstable floors.
- Over heating floor on service, stop the heating 24 hours before and turn it on after at least 21 days once the works, following gradually the startup protocol.
- Over mortars calcium sulfate and lime base.

Characteristics

- Kneading and transport by pumping.
- Mass life: 10- 20 minutes.
- Setting start: 45 minutes.
- Dry touch: 5 a 7 hours.
- Passable (pedestrian): > 10 hours.
- Time for dry polish: >4 days.
- The water percentage can oscillate depending on the used mixer.

** These results are contemplated with 20°C and they can oscillate depending on the ambient temperature.*

Performances (10 mm)

- Kneading water (in laboratory): 14 %
- Bending resistance: $\geq 9 \text{ N/mm}^2$
- Compression resistance: $\geq 50 \text{ N/mm}^2$
- Wastage UNE-EN 13892-4: $\geq 18 \text{ cm}^3 / 50 \text{ cm}^2$
- Abrasion wear: $\leq 21 \text{ mm}$
- Slip resistance according to CTE: Class 1
- Adherence over concrete: $\geq 1,5 \text{ N/mm}^2$
- Adherence over nonabsorbent support with joining bridge: $\geq 0,9 \text{ N/mm}^2$
- Impact resistance, UNE-EN 12633;
 - **Height of fall: >1500 mm
 - **Value IR: IR=14,7 N·m
- Behavior against fire: A1 Euroclass
- Designation: EN 13813:2003 - CT-C40-F7-A21

*** These results are from standard essays and can oscillate depending on the workplace conditions.*

Enforcements

- Fluid concrete based on marble aggregates, granite, glass... for the continuous floor formation, on new construction or rehabilitation.
- For floor where a high planimetry is required.
- Public construction, great surfaces, hotels, private construction...
- Industrial floors renovation.
- Light traffic and moderated heavy traffic.
- Indoors.

Supports

- Mortars and concretes, anhydrite, of high resistance to the compression (> 25 N/mm²).
- Over supports with humidity <4%.

Thicknesses

- Recommended >15 mm at all points.

Finish

- Polished.

Recommendations

- Application temperatures 10°C to 30°C.
- The water percentage can oscillate depending on the used mixer.
- Respect always the same time and water percentage during the kneading.
- Do not add any additive to the concrete.
- Respect the minimum thicknesses required depending on the kind of support.
- Respect, perimeter joint (min. 5 mm), expansion and division joint.

Execution conditions

- The support must be solid and hard, dry, without dust, degrading zones, painting, oils...
- Do not apply over fissured concretes, degrading or with movement possibility...
- In all cases, on new concrete (set >28 days) or old and compression >25 N / mm², mill the surface layer until the aggregate appears and apply the **Pavex primer system**.
- On supports without absorption (marble, granite ...), milling, vacuuming and applying the **Pavex primer system**.
- On weak cementitious bases and without guarantees, mill until the aggregate appears, aspirate and reinforce with hardener **Silicate**.
- If necessary, before pouring, apply 1-2 passes of **F-300** quick primer.
- Respect the expansion joints, of work, by cutting or placing profile.
- Avoid direct sunlight, drafts, during and 72 hours after application.

Terrazo Pavement®

Collored concrete with aggregates

Usage way

Kneading water according grain size: 14-16%.
(1 sack 25 kg + aggregates)

** The dosage may vary considerably depending on the intensity of the chosen color and size distribution of the aggregate.*

If necessary, use the spiked roll to eliminate the occluded air in the mass and obtain a better levelling.

Dry polished: >4 days.

*** These times can oscillate depending on the ambient temperature.*

Important: Perform always a previous essay with the water percentage that is going to be used in production afterwards.

Associated products

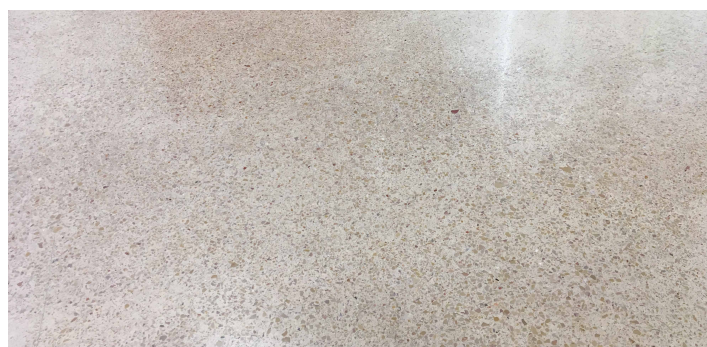
*Pavex-2c primer

*F-300

*Hydrofugant 6772

*HO-sealant

*Silicate



**TERRAZO
PAVIMENTO®**

HORMIGÓN FLUIDO COLOREADO
CON AGREGADOS

Pavistamp®

Packaging

25 kg sack
Aggregates according percent
1200 kg pallet (48 sacks)

Colors

14 colors range
(Others on demand)

Consumption

18-22 kg/m² and cm thickness
(aggregate according to particle size)

Preservation

In the closed original container and sheltered from
outdoor and humidity: 6 months

⚠ IMPORTANT

The observations and prescriptions of this data sheet, although corresponding to our best experience, should be considered, in any case, purely indicative, and should be tested by exhaustive practical applications; therefore, before using the product, the user must establish whether or not it is suitable for the intended use, and assumes all liability that may arise from its use. Once the product has been handled or applied, the manufacturer shall not assume any claim whatsoever, nor any liability as to the manner, mode and conditions of application.