

# Decosol Industrial®

## Colored mortar for industrial paving

Cement, quartz sand (different grain sizes), pigments and additives.



### Product

- High performances mortar
- Excellent durability
- Road traffic and pedestrian traffic resistant
- Colored

### Observations

- The waiting times for application oscillate depending on the temperature, humidity and concrete kind.
- Protect all the easily stained zones with **Protector Pavistamp** (chests, kerbs, skirting...).
- With hot weather or wind use the superficial retarder **Bryten CH** to control quick humidity evaporation on the fresh concrete surface so that enables a perfect union between the mortar and concrete, avoiding the superficial fissures appearance.

### Characteristics

- Manual application of **Decosol industrial** on fresh concrete.
- The mortar must be completely integrated on the fresh concrete.
- Avoid soaking the concrete with water.
- In the cold weather time, accelerate the concrete setting process with **Hormidur- SC**.
- After the first 24 hours approx. cut the expansion joints.

### Performances (6 kg/m2)

- Kneading water (Grey-C color): 12-14%
- Compression resistance:  $\geq 30$  N/mm<sup>2</sup>
- Bending resistance:  $\geq 6$  N/mm<sup>2</sup>
- Wear resistance:  $\leq 21$  mm
- Adherence to the support:  $\geq 1$  N/mm<sup>2</sup>
- Slip UNU-ENV 12633: USRV36 Class 3
- Impact resistance, UNE-EN ISO 6272-1:
  - \*\*Height of fall: >1500 mm
  - \*\*Value IR: IR=14,7 N·m
- Behavior against fire: A1 euroclass

\* These results are from standard essays with 6 kg/m2 and they can oscillate depending on the workplace conditions.

### Enforcements

- High resistance colored mortar for the industrial paving to be applied on the fresh concrete.
- Excellent resistance.
- Developed to avoid dust release from the conventional concrete.
- Commercial premises, parking, industrial plants...
- Indoors and outdoors.

### Supports

- On fresh concrete.

### Finishes

- Polished – trowelled – striped
- Hydrate layer (fresh on fresh).

### Enforcement tips

- Application temperatures: 5-35° C.
- The water percentage can oscillate depending on the used mixer.
- Do not add water once the product has been sprinkled over the fresh concrete.
- Avoid application with strong wind or direct insolation.
- Respect, perimeter joint (min. 5 mm), expansion and splitting joints.

### Execution conditions

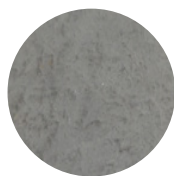
- The base is properly compacted and it has obtained the approval from the Project management team to receive the concrete.
- The site management team or the property will always decide concrete thickness.
- The concrete will be manufactured in an authorized plant and will be transported with concrete trucks in 30 minutes, it will have a cone of fall of 6.5 to 8 cm, to avoid the increase of slag and the segregation of granules.
- In the minutes following the regularization of concrete, it is smoothed allowing water to rise by capillarity and ensure perfect adhesion between concrete and mortar.
- Outdoors do not apply with wind, direct insolation, rain risk or frost-thaw possibility.
- Avoid application with low temperatures during the hours following to the mortar application. It increases the efflorescence by carbonation appearance risk.

# Decosol Industrial®

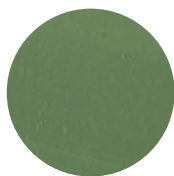
Colored mortar for industrial paving

## Usage way

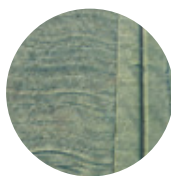
- Manual dusting application
- Mechanical application
- Hydrated layer (fresh over fresh)



Trowelled



Polished



Striped

**Optional:** Once the expansion joints are opened and the floor has no standing water, apply 1 - 2 passes of resin **F-300, F-250, Paviplast epoxy** without overloads.

## Associated product

- \*Fiberglass
- \*Hormidur SC
- \*F-300
- \*F-250
- \*Protector Pavistamp
- \*Bryten CH
- \*Paviplast epoxi
- \*Microspheres



## ⚠ IMPORTANT

The observations and prescriptions of this technical sheet, even corresponding to our best experience, should be considered, in any case, purely indicative, and must be tested by exhaustive practical applications; Therefore, before using the product, whoever is going to do it must establish whether it is suitable for the intended use, and assumes any responsibility that may arise from its use. Once the product is handled or applied, the manufacturer will not assume any claim, nor will it be responsible for the form, mode and conditions of application.



## Packing

25 kg sack  
1200 kg pallet (48 sacks)

## Colors



## Consumption

Manual application: 3-6 kg/m<sup>2</sup> and depending on the color  
Mechanical application: 6-12 kg/ m<sup>2</sup>  
Hydrated layer: ±20 kg/m<sup>2</sup> and cm thickness (fresh on fresh)

## Preservation

In original closed container, and sheltered from outdoor and humidity: 1 year