

Despi

Powder demolding

Waxes, micronized pigments and additives.



Product

- For immediate desmolding
- Does not stick to the mould
- For ageing the pavement
- Excellent yield

Characteristics

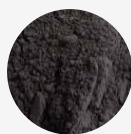
- Release agent for printed concrete and mortars.
- Prevents the mortar from sticking to the mold.
- Used for aging the floor or wall.

Performances

- Water solubility: insoluble.
- Separating temperature: 250°C.
- PH: 8-9 (50 g/L water).
- No toxic.

Colors

- 15 standard colors (other colors by order)



DESPI 10



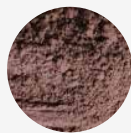
DESPI 13



DESPI 20



DESPI 30



DESPI 64



DESPI 96



DESPI
NEUTRAL



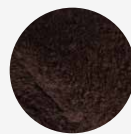
DESPI GN



DESPI
UNIVERSAL



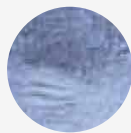
DESPI 69



DESPI 06



DESPI 86



DESPI BLUE



DESPI 50



DESPI 101

Despi

Powder demolding

How to use

Sprinkle on concrete or mortar in a plastic state.

Apply a layer covering the entire surface.

Avoid application when the concrete has excess surface water, and white areas would be formed very difficult to control.

Do not apply with strong wind.

Associated products

*Pavifluid
*Pavifluid-HD
*Pavistamp
*Pavistamp-HD
*Padec
*Release agent-L2



Packaging

10 liters drum
Pallet of 675 liters (27 drums)

Consumption

0,08-0,1 l/m²

** This consumption may oscillate according to the application.*

Preservation

In the closed original container and sheltered from outdoor and humidity.

⚠ IMPORTANT

The observations and prescriptions of this data sheet, although corresponding to our best experience, should be considered, in any case, purely indicative, and should be tested by exhaustive practical applications; therefore, before using the product, the user must establish whether or not it is suitable for the intended use, and assumes all liability that may arise from its use. Once the product has been handled or applied, the manufacturer shall not assume any claim whatsoever, nor any liability as to the manner, mode and conditions of application.