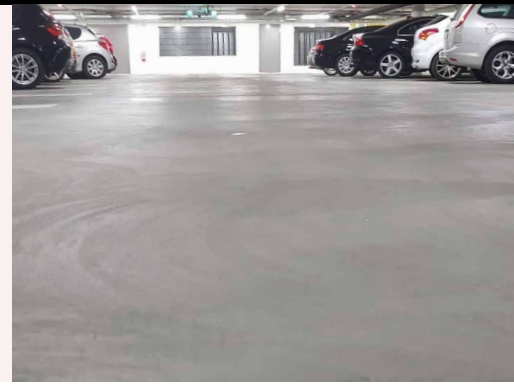


Padec Industrial 400®

Colored mortar for industrial paving

Cement, quartz sand (different grain sizes), pigments and additives.



Product

- High performances mortar
- Excellent durability
- Resistant to road and pedestrian traffic
- Colored

Observations

- The waiting times for application oscillate depending on the temperature, humidity and concrete kind.
- Protect all the easily stained zones with **Protector Pavistamp** (chests, kerbs, skirting...).
- With hot weather or wind use the superficial retarder **Bryten CH** to control quick humidity evaporation on the fresh concrete surface so that enables a perfect union between the mortar and concrete, avoiding the superficial fissures appearance.

Characteristics

- Manual application of **Padec Industrial 400** on fresh concrete.
- The mortar must be completely integrated on the fresh concrete.
- Avoid soaking the concrete with water.
- In the cold weather time, accelerate the concrete setting process with **Hormidur- SC**.
- After the first 24 hours approx. Cut the expansion joints.

Performances (6 kg/m2)

- Kneading water (Grey-C color): 12-14%
- Compression resistance: ≥ 80 N/mm²
- Bending resistance: ≥ 10 N/mm²
- Wear resistance: ≤ 21 N / mm²
- Adherence to the support: ≥ 1 N/mm²
- Slip UNU-ENV 12633: USRV36 Class 3
- Impact resistance, UNE-EN ISO 6272-1:
 - **Height of fall: >1500 mm
 - **Value IR: IR=14,7 N-m
- Classification according CTE, Section SU1: Class 3
- Behavior against fire: A1 euroclass
- Designation EN-13813: CT-C80-F10-A21

* These results are from standard essays with 6 kg/m2 and they can oscillate depending on the workplace conditions.

Enforcements

- High resistance colored mortar for the industrial paving to be applied on the fresh concrete.
- Treading layer with excellent resistance.
- Commercial premises, parking, industrial plants, airport runways...
- Indoors and outdoors.

Supports

- On fresh concrete.

Finishes

- Polished – trowelled – striped.
- Hydrate layer (fresh on fresh).

Recommendations

- Application temperatures: 5-30° C.
- The water percentage can oscillate depending on the used mixer.
- Do not add water once the product has been applied over the fresh concrete.
- Avoid application with strong wind or direct insolation.
- Respect, perimeter joint (min. 5 mm), expansion and fractionation.

Execution conditions

- The base is properly compacted, and it has obtained the approval from the Project management team to receive the concrete.
- The site management team or the property will always decide concrete thickness.
- The concrete will be manufactured in an authorized plant and will be transported with concrete trucks in 30 minutes, it will have a cone of fall of 6.5 to 8 cm, to avoid the increase of slag and the segregation of granules.
- In the minutes following the regularization of concrete, it is smoothed allowing water to rise by capillarity and ensure perfect adhesion between concrete and mortar.
- Outdoors do not apply with wind, direct insolation, rain risk or frost-thaw possibility.
- Avoid application with low temperatures during the hours following to the mortar application. It increases the efflorescence by carbonation appearance risk.

Padec Industrial 400®

Colored mortar for industrial paving

Usage way

- Manual application
- Mechanical application
- Hydrated layer (fresh over fresh)



Trowelled



Polished



Striped

Optional: Once the expansion joints are opened and the floor has no standing water, apply 1 - 2 passes of resin **F-300, F-250, Paviplast epoxy** without overloads.

Associated products

- *Fiberglass
- *Hormidur SC
- *F-250
- *F-300
- *Protector Pavistamp
- *Bryten CH
- *Paviplast epoxi
- *Microspheres



Packaging

25 kg sack
1200 kg pallet (48 sacks)

Color



Cement gray, red and green
(others on demand)

Consumption

Manual application: 3 - 6 kg/m²
Mechanical application: 6 -12 kg/m²
Hydrate layer (fresh on fresh): ±20 kg/ m² and cm thickness

Preservation

In original closed container, and sheltered from outdoor and humidity: 1 year

⚠ IMPORTANT

The observations and prescriptions of this technical sheet, even corresponding to our best experience, should be considered, in any case, purely indicative, and must be tested by exhaustive practical applications; Therefore, before using the product, whoever is going to do it must establish whether it is suitable for the intended use, and assumes any responsibility that may arise from its use. Once the product is handled or applied, the manufacturer will not assume any claim, nor will it be responsible for the form, mode and conditions of application