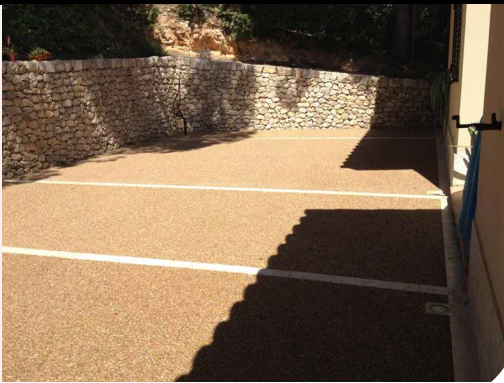


Pavidur-1C CL/HITECH

Viscous adhesive for stone union

One component adhesive, without solvents and loadings, classified in category Bfl s1 as fire resistant.



Product

- Does not become yellow
- Colored continuous pavement
- Permeable and breathable
- In swimming pools surrounds
- Colors chart
- High resistance

Observations

- Do not incorporate water and no other additive to the mixture.
- Treat the singular zones (fissures...) with the adequate mesh.
- The drying time will oscillate depending on the ambient temperature and existing humidity.
- Do not apply with rain risk, frosts, important temperature changes, direct insolation, strong wind...
- In case of emergency (rain, frost, extreme temperatures), always have tarps available to protect the pavement and not lose its characteristics.
- Over existing concrete base: consult.

Characteristics

- Application temperature measured over the pavement: 10 – 30°C
- Mixture life (20°C): 1 – 2 hours
- Thickness from 3 to 6 cm
- Dry touch: ≥5 hours
- Total dry: ±24 hours (3 cm / 20°C)
- Operating disposal time: > 2 days

* These times are contemplated at 20°C and they can oscillate depending on the ambient temperature.

System

System	1 Comp.
% Arid: Resin in volume	95:5
Arid wetting	Good
Ambient temperature drying	≥7 h
Ambient temperature cured	≥24 h
Bending resistance 6 days	≥4 Mpa
Compression resistance 6 days	≥8 Mpa
Bending resistance 14 days	≥5 Mpa
Compression resistance 14 days	≥10 Mpa
Outdoors resistance	Excellent
Thermal shock	Breakage

Enforcements

- Surface fixer and mass binder, for triturated arid union.
- Permeable water.
- Avoids ponded water.
- Roundabout outlines, terraces, pedestrian streets, sidewalks, swimming pools, tree crown
- Moderated road traffic.
- Without maintenance.
- Does not become yellow.

Supports

- Concrete, compact gravel...

Finishes

- Seen arid.

Recommendations

- Application temperatures 10°C to 30°C.
- Respect always the same percentage **Pavidur-1C CL/HITECH** during the mixture.
- Do not add water to the product.
- Respect the expansion joints, perimeter joints and retraction joints.
- Preview the adequate inclinations for water evacuation.

Execution conditions

- Over vegetal land floor partially erased, leveled and eventually consolidated through drainage sanitized with an anticontamination layer. It has to accomplish the compaction required by project or site management team.
- The existing support has to be resistant, healthy, without dust, paintings, oils ...
- In case of applying over new concrete, its setting has to be completed (≥28 days) and with adequate inclinations for water evacuation.

Pavidur-1C CL/HITECH

Viscous adhesive for
stone union

Usage way

Add arid in the concrete mixer and the adhesive for its correct mixed, minimum during 10 minutes.

Grain size	Dosage
9-12 mm	4%
5-9 mm	5%

Once the mass is spilt over the pavement, smooth manually with a proper trowel or trowelling machine.

Desage example:

Arid 5 – 9 mm = 5 lt **Pavidur-1c CL/HITEC**. + 100 kg arid.

** Before using the product, it is recommended to make a real test at the workplace and prove if the performances and finishes are the expected ones.*



Associated products

*Pavidur-1c

*Pavidur-1c AM/ECO

*Arid



Packaging

Colors

Colors chart

Consumption

(approximate)

Liquid: 0,75 l/m2 and 1 cm thickness

Arid: 15 kg/m2 and 1 cm thickness

Preservation

! IMPORTANT

The observations and prescriptions of this technical sheet, even corresponding to our best experience, should be considered, in any case, purely indicative, and must be tested by exhaustive practical applications; Therefore, before using the product, whoever is going to do it must establish whether it is suitable for the intended use, and assumes any responsibility that may arise from its use. Once the product is handled or applied, the manufacturer will not assume any claim, nor will it be responsible for the form, mode and conditions of application.