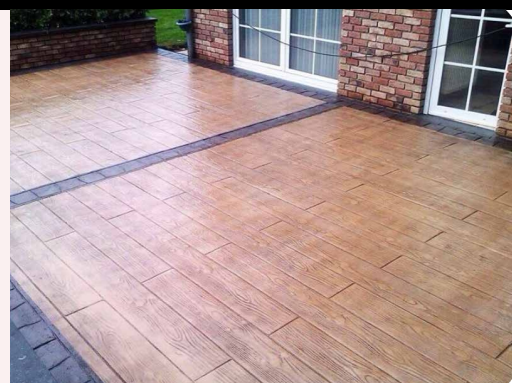


# Pavifluid HD®

Fluid and colored mortar  
resistant to the salts

Hydraulic bindings, micronized quartz sand, mineral pigments, additives and glass fibers.



## Observations

- Do not add any additive to the mortar.
- Do not apply over lime base mortars (calcium sulfate).
- Over wet floors subjected to continuous humidity rising.
- Do not apply **Pavifluid-HD** over non-guaranteed concretes.  
The drying time will oscillate depending on the ambient temperature and existing humidity.
- Do not incorporate more water to the mixture than the recommended one, as it would alter the settings and the performances.

## Characteristics

- Mixture life: 40-50 minutes
- Let rest: 2 min
- Open time: 20-30 minutes
- Thickness (finish): 10 and 15 mm
- Dry time: from 5 to 6 hours
- Commissioning: from 24 to 36 hours

*\* These times are contemplated at 20°C, and they can considerably oscillate depending on the ambient temperature.*

## Performances (10 mm)

- Kneading water (in laboratory): 14%
- Ice-thaw with salts immersion: 0,16 Kg / m<sup>2</sup>.
- Compression resistance: ≥20 N/mm<sup>2</sup>
- Bending resistance: ≥6 N/mm<sup>2</sup>
- Adherence to support: ≥1,8 N/mm<sup>2</sup>
- Wear resistance: ≤21 N/mm<sup>2</sup>  
Impact resistance, UNE-EN 12633:  
\*\*Height of fall: >1500 mm
- \*\*Value IR: IR=14,7 N·m
- Slip according CTE: Class 3
- Behavior against fire: A1 euroclass
- Designation EN 13813: CT- C20- F6- A21

*\*\* These results are from standard essays and they can oscillate depending on the workplace conditions.*

## Enforcements

- Fluid colored mortar with high performances and quick setting, frost-thaw resistant with salts immersion, for road traffic and pedestrian traffic floor renovation, indoors and outdoors.
- Floor reparation.
- Over concrete with compression >20 Nmm<sup>2</sup>.
- Indoors and outdoors.

## Supports

- Concrete, mortar, ceramic, marble...

## Thickness

- 10 to 15 mm (finished)
- Until 40 mm (as screed)

## Finishes

- Stamping, smooth, troweled or striped.

## Recommendations

- Application temperatures 5°C to 25°C.
- The water percentage can oscillate depending on the used mixer.
- Respect always the same water percentage.
- Do not add water to the product after the kneading.
- Respect the perimeter joints (min. 5 mm) the expansion joint and retraction joints with a cutting or the decorative joint.
- Treat the singular zones (fissures...) with metallic mesh or glass fiber.
- Do not apply with direct insolation, strong wind...

## Execution conditions

- The existing support must be resistant, and its setting must be complete. It must be without dust, paintings, oils...
- On nonabsorbent supports, mill, vacuum and apply the **system Pavex primer**.
- Always, over new concrete (setting > 28 days) or old concrete with compression > 20 N/mm<sup>2</sup> (measured at the workplace), mill the superficial coat until the arid appearance, vacuum and apply the **system Pavex primer**.
- On old concretes, mill until the arid appearance, vacuum, and reinforce with **Silicate** hardener.
- Do not apply **Pavifluid HD** over very deteriorated or fissured concretes.
- Avoid application over surfaces exceeding 25°C measured over the pavement.
- Outdoors, do not apply with direct insolation, wind, rain risk or frost-thaw possibility.

# Pavifluid HD®

Fluid and colored mortar  
resistant to the salts

## Usage way

- **Kneading and transport with pumping:**  
14-16 % water
- **Manual kneading:**  
A 25 kg sack with 3,5 – 4 clean water liters, until obtaining a homogenous mass without lumps. Let stand and knead.

Apply the desired thickness and smooth with the adequate tool.

Stamping finish, sprinkle **Despi** and texture with the selected molds.

After 24 hours (depending on climatology), eliminate the **Despi** with pressure water.

And without ponded water, apply without overloading 1-2 resin passes **F-250** or **F-300**.

*\* The times can oscillate depending on the ambient temperature.*

## Associated products

\*System Pavex primer

\*Silicate hardener

\*Despi

\*F-300

\*F-250

\*Water based epoxy



## Packaging

25 kg sack  
1200 kg pallet (48 sacks)

## Colors

Pavistamp colors chart  
(others on demand)

## Consumption

±2 kg/m<sup>2</sup> and mm thickness

## Preservation

In original closed container, and sheltered from outdoor and humidity: 1 year

## ⚠ IMPORTANT

The observations and prescriptions of this technical sheet, even corresponding to our best experience, should be considered, in any case, purely indicative, and must be tested by exhaustive practical applications; Therefore, before using the product, whoever is going to do it must establish whether it is suitable for the intended use, and assumes any responsibility that may arise from its use. Once the product is handled or applied, the manufacturer will not assume any claim, nor will it be responsible for the form, mode and conditions of application.