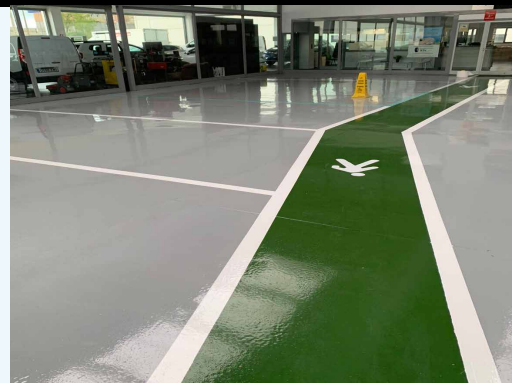


Pavex-2C Color

Finish epoxy painting

Finish epoxy painting and high chemical resistance.



Product

- High chemical resistance.
- Seals and waterproofs.
- Increases the hardness and resistance against abrasion.
- Pavements subjected to chemical attacks.

Resistance table

• Dry heat temperature:		130°C
• Wet heat temperature:		75°C
• Saline fog	Resistance	> 1000 hours
• Diluted acids	Resistance	> 1 year
• Diluted alkalis	Resistance	> 1 year
• Marine environment	Resistance	> 3 years
• Industrial environment	Resistance	> 3 years
• Water immersion	Resistance	> 5 years
• Salt water immersion	Resistance	> 5 years
• Resistant		-20°C

Usage characteristics

- Mixture life: 20 minutes
- Dry 20°C and relative humidity 60%
 - Dry touch: 3-4 hours.
 - Total dry: 8-10 hours
 - Total polymerization: 7 days
- Final aspect: porcelain effect
 - It can be diluted with **Diluting epoxy**, 25% the first coat, 5-10% the following.

** These times are contemplated with 20°C and they can oscillate depending on the ambient temperature.*

Performances

- Composition: Resin Epoxy
- Mixture weight: 1.1 g/cm³
- Aspect/finish: bright
- Viscosity: 70-80 UD / KREBS
- Water absorption: Null

** These results have been obtained with standard essays and they can oscillate depending on the workplace conditions.*

Enforcements

- Epoxy covering for pavement and coating protection indoors.
- Protect erosion of pavements subjected to intense traffic.
- Supports the continuous immersion in industrial waters, marine waters...
- Fit in chemical installation, alimentary installations... and industrial vehicles in corrosive atmospheres.
- Indoors.

Supports

- Concrete, metal, construction, naval, wood...

Enforcement tips

- Application temperatures from: 10-30°C
- Maximum relative humidity: 70 %
- Humidity on the support: <4%
- Respect always the same dosage.
- Do not apply over wet floors or subject to possible humidity rising
- Do not add any additive to the mixture.
- In solvent basis
- Avoid splashes of the product in the eyes and skin

Execution conditions

- Over surfaces completely dry and without humidity, clean and without greases and other materials.
- Do not apply with humidity superior to 70% and ambient temperature inferior to 15°C.
- Over cement base, its setting has to be completed (≥28 days) and with humidity on the support lower than 4%.
- Apply with good air renovation
 - Over smooth surfaces, nonabsorbent, open porous by mechanical media (abrasive spouted, troweled, abrasive disk) accompanied by a deep aspiration.
- In order to ensure the adhesion, apply previously a primer coat **Pavex 2C Primer** with support humidity < 4%.

Pavex-2C Color

Finish epoxy painting

Usage way



Mix the components **A + B** with a low revolution whisk until obtaining a perfect homogenizing.

The 2 components mixture has an approximately 20 minutes life time.

Application can be performed with airless, brush, roll...



It can be diluted with **Epoxy diluting**, 25% for the first coat, 5-10% for the following.

Between coats, it has to rest minimum 4 hours and maximum 24 hours. In case of exceeding this maximum, a previous superficial sanding has to be performed.

** In case of appearing a light superficial veil after the drying, it disappears cleaning the surface with water and soap.*

Associated products

*Pavex-2c primer

*Epoxy diluting



Packaging

30 kg pack (A+B)

Colors

Colors on demand

Consumption

5-7 m²/kg per layer (30 – 40 microns)

**These consumptions can oscillate depending on the support*

Preservation

12 months from the fabrication date, in the closed original package (20°C) and sheltered from outdoor and humidity.

⚠ IMPORTANT

The observations and prescriptions of this data sheet, although corresponding to our best experience, should be considered, in any case, purely indicative, and should be tested by exhaustive practical applications; therefore, before using the product, the user must establish whether or not it is suitable for the intended use, and assumes all liability that may arise from its use. Once the product has been handled or applied, the manufacturer shall not assume any claim whatsoever, nor any liability as to the manner, mode and conditions of application.