

# Pavex-2C Primer

## Epoxy primer 100% solids

Epoxy primer 100% solids without solvents for primer over concrete, old-new concrete joining bridges and preparation of epoxy mortars.



### Product

- High chemical resistance
- Good anchorage over concrete
- Excellent anchorage over finish resin base layers
- Great adhesive power

### Resistance table

|                          |            |              |
|--------------------------|------------|--------------|
| • Dry heat temperature:  |            | 130°C        |
| • Wet heat temperature:  |            | 75°C         |
| • Saline fog             | Resistance | > 1000 hours |
| • Diluted acids          | Resistance | > 1 year     |
| • Diluted alkalis        | Resistance | > 1 year     |
| • Marine environment     | Resistance | > 3 years    |
| • Industrial environment | Resistance | > 3 years    |
| • Water immersion        | Resistance | > 5 years    |
| • Salt water immersion   | Resistance | > 5 years    |
| • Resistant              |            | -20°C        |

### Characteristics

- Mixture life: 15 minutes
- Dry 20°C and relative humidity 60%
  - Dry to the touch: 4-6 hours
  - Total drying: >6 hours
  - Total polymerization: >7 days
- Final aspect: porcelain

*\* These times are contemplated with 20°C and they can oscillate depending on the ambient temperature.*

### Performances

- Composition: Resin epoxy two component
- Mixture weight: 1.1 g/cm<sup>3</sup>
- Aspect finish: bright
- Viscosity: 70-80 U. /KREBS
- Absorption over concrete: 2.2 N/mm<sup>2</sup>
- Compression resistance at 7 days with epoxy mortar (mixture A+B + arid): ≥50 MPa.

*\* These results have been obtained with standard essays and they can oscillate depending on the workplace conditions.*

### Enforcements

- 100% solid epoxy coating for the preparation of primers on concrete floors, intermediate layers in laminates with glass fibers and multilayer systems.
- Protects erosion from pavements subject to heavy traffic.
- Supports continuous immersion of industrial, marine waters...
- Suitable for chemical, food... and industrial vehicles in corrosive atmospheres.
- Indoor.

### Supports

- Concrete, cements, mortars.

### Recommendations

- Application temperatures: 15-25°C.
- Respect always the same dosage.
- Do not apply over wet floors or subject to possible humidity rising.
- Do not add any additive to the mixture.
- Avoid splashes of the product in the eyes and skin.

### Execution conditions

- Over surfaces completely dry and without humidity, clean and without greases and other materials.
- Do not apply with humidity superior to 85% and ambient temperature inferior to 15°C.
- Over cement base, its setting has to be completed (≥ 28 days) and with humidity on the support lower than 4%.
- Over smooth surfaces nonabsorbent, open the pore mechanically means (abrasive spouted, troweled, abrasive disk) accompanied by a deep aspiration.
- Apply with good air renovation, 100% solids without solvent.

# Pavex-2C Primer

Epoxy primer 100% solids

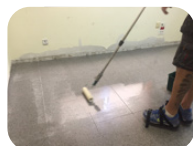
## Usage way



Mix the components **A + B** with a low revolution whisk until obtaining a perfect homogenizing.

The 2 components mixture has an approximately 15 minutes lifetime.

Application of the already mixed product can be performed with airless, brush, roll...



*\* Between layers, a minimum of 6 hours and a maximum of 24 hours must pass. If this maximum is exceeded, a preliminary surface sanding must be performed*

*\* In case of appearing a light superficial veil after the drying, it disappears cleaning the surface with water and soap.*

## Associated products

\*Epoxy paints and mortars



### Packaging

30 kg pack (A+B)

### Colors

Colorless

### Consumption

4-5 m<sup>2</sup>/kg 1 pass (80 – 100 microns)

\* These consumptions can oscillate depending on the support

### Preservation

In the closed original container (20 °C) and sheltered from outdoors: 1 year

## ⚠ IMPORTANT

The observations and prescriptions of this data sheet, although corresponding to our best experience, should be considered, in any case, purely indicative, and should be tested by exhaustive practical applications; therefore, before using the product, the user must establish whether or not it is suitable for the intended use, and assumes all liability that may arise from its use. Once the product has been handled or applied, the manufacturer shall not assume any claim whatsoever, nor any liability as to the manner, mode and conditions of application.