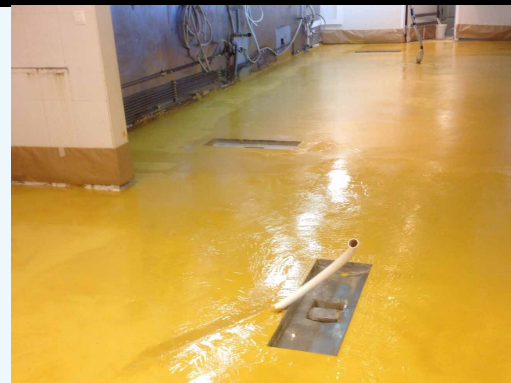


Pavifort San

Epoxy covering for sanitary use

Epoxy covering without solvent with high chemical resistance.



Product

- For alimentary industry.
- Without solvents.
- For deposits and silos.
- Without joints.
- Product homologated by Spanish Ministry of Health and Consumers Affairs.

Resistance table

PRODUCT	INMERSION	RESULT
• Ammonia 3%	1 year	Unaltered
• Caustic soda 3%	1 year	Unaltered
• Safe water	6 years	Unaltered
• Seawater	6 years	Unaltered
• Wine	6 years	Unaltered
• Beer	6 years	Unaltered
• Cider	6 years	Unaltered
• Olive oil	6 years	Unaltered
• Sugary dissolution	6 years	Unaltered

Usage characteristics

- Mixture usage life (20°C): 15-20 minutes
- Dry touch (25°C): lower than 2 hours
- Dry without stickiness (25°C): lower than 6 hours
- Time between layer and layer: minimum 12 hours to maximum 24 hours
- Complete cured (25°C): > 7 days
- Complete cured (15°C): > 12 days

**These times are contemplated with 15-25°C and they can oscillate depending on the ambient temperature.*

Performances

Solids in volume: 100%

It can be diluted until a 10% with **Sanitary Diluting.*

Enforcements

- Covering based on epoxy resins 100% solids with great chemical resistance, formulated to be in contact with alimentary products.
- In tank interiors or silos, from concrete and also from steel containing oils, wines, preserves...
- Pavements protection in sanitary industries, meat industries, pharmaceutic laboratories...
- Indoors.

Supports

- Concrete, polished concrete, steel...
- Over safe water conductions.

Enforcements tips

- Application temperatures from 10-35°C
- Maximum support humidity: 4%
- Maximum relative humidity: 70%
- Do not perform partial mixtures but total depending on the delivery way.
- Respect always the same dosage.
- Do not add any additive to the mixture.

Pavifort San

Epoxy covering for sanitary use

Execution conditions

- Over concrete: In order to obtain optimal results, it is necessary that the concrete presents:

- A) A resistant and steady surface.
- B) It has to be dry, without greases and other materials.
- C) Its setting has to be completed ≥ 28 days and with humidity $< 4\%$.

- In the preparation it is recommended a spouted with sand, sandblast and water, brush with steel tines, acid stripped, with dissolution 10% and posterior dry.

- Over smooth surfaces, nonabsorbent... sand before and open porous, in order to secure a good anchorage.

Usage way



Mix Component **A** and simultaneously pour the contents of Component **B** (hardener), with homogenous slow beater.

Important: once the mixture is done there are only 15 to 20 minutes to perform the application.



The application can be performed with brush, roll until forming a continuous layer with the desired thickness.

Important: In the event of exceeding the maximum time between layer and layer, a superficial sanding will be performed in order to secure the product adherence.

Associated products

*Sanitary diluting

*Vitrex wine



Packaging

Pack (A+B): 20 kg

Colors

Red and russet

Consumption

0,8-1 kg/m² (2 layers), in order to guarantee a skin thickness from 400 to 600 microns.

**The consumptions can oscillate depending on the support absorption.*

Preservation

In original closed container (20°C), and sheltered from the elements and humidity: 1 year

⚠ IMPORTANT

The observations and prescriptions of this data sheet, although corresponding to our best experience, should be considered, in any case, purely indicative, and should be tested by exhaustive practical applications; therefore, before using the product, the user must establish whether or not it is suitable for the intended use, and assumes all liability that may arise from its use. Once the product has been handled or applied, the manufacturer shall not assume any claim whatsoever, nor any liability as to the manner, mode and conditions of application.