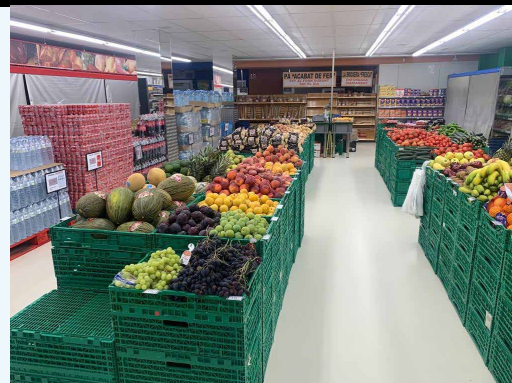


Poliuretano alifático

Polyurethane with high chemical resistance

Two components painting with aliphatic polyurethane resin base.



Properties

- Highly flexible.
- Over cement bases.
- Excellent mechanical resistance.
- Color permanency.

Usage characteristics

- Mixture life: ±8 horas
- Dry touch: 6-8 horas
- To repaint: 8-12 horas
- Total dry : >24 horas

**These times are contemplated at 20°C and they can oscillate depending on the temperature ambient.*

Resistances table

(immersion tests, quick primer application of **Pavex-2C primer** with a thickness of 60 µm)

• Hydrochloric acid 10 & 20%	500 hours	Unaltered
• Sulfuric acid 10 & 20%	500 hours	Start oxidation
• Distilled water	8 months	Unaltered
• Sodium chloride at 3.5%	8 months	Unaltered
• Sodium hydroxide at 20%	15 days	Unaltered
• Ammonia	3 months	Regular
• Isobutyl acetate	8 months	Unaltered
• White Spirit	6 months	Well
• Saline fog 5% sodium chloride and 37 – 38°C	8 months	Unaltered
• Ambient: Humidity 100% & 40°C	3 months	Well

Performances (thickness 50 µm)

• Solids in volume (v/v):	51%
• Specific weight:	1.2-1.3 g/ml
• Viscosity 25°C in CF4:	100-120 sec.
• Aspect:	Painting
• Content in COV's:	441 g/l
• Hardness Persoz INTA 160263:	35 seg. (24 Horas)
• Flexibility r=3mm:	Complies
• Gridded adherence:	100%
• Direct impact: (ball 12,5 from 50 cm)	Cumple

**Content in COV's;

Limit value from UE for the product: <500 g/l (2010)

Enforcements

- Finish painting based on aliphatic polyurethane in 2 components, suitable for places where special performances are required.
 - High chemical resistance
 - For swimming pool protection
 - Indoors and outdoors

Supports

- **Microcement**, concrete, mortars, **Pavistone** thematic rock, terrazzo, ceramic...

Enforcement tips

- Application temperatures: 10-25°C.
- Over base completely dry and without any humidity <4%.
- Respect always the same dosage.
- Do not add any additive to the mixture.
- Do not apply with capillary rising humidity possibility.

Poliuretano alifático

Polyurethane with high chemical resistance

Execution conditions

- Always perform the application over surfaces that are dry, clean, without loadings, oils and other materials.
- Over smooth and nonabsorbent surfaces, before applying the primer, sand, open porous and vacuum deeply.
- Avoid painting with humidity presence.
- Over cementitious base **Microcement**, concrete, mortars... its setting has to be completed (≥ 28 days) and without humidity $< 4 \%$.
- Preparation of the surface with primer **Pavex Primer**.
- Avoid application with air streams, direct insolation, rain risk, frost and thaw.
- Outdoors the maximal application temperature will be always $< 25^{\circ}\text{C}$ measured over the surface to be treated.

Usage ways



Mix the 2 components homogeneously
The low viscosity from **Aliphatic Polyurethane**, allows the product to be applied in a pure state.

Application with roller, brush or pistol.

With pistol, previously diluted with a maximum 10% of **Polyurethane Diluting**. Interval between layers: 4-12 hours.

*Times may vary depending on weather conditions.



Associated products

- Pavex-2C primer
- Microcement
- Pavistone
- Polyurethane Diluting



Packing

25 kg pack (A+B)

Colors

Colorless
(Other colors on demand)

Consumption

(with brush or curler)

1 kg: 10 – 14 m² (1 layer with 30 microns) and depending on the water absorption.

Preservation

In original closed container (20 °C) and sheltered from the elements and humidity: 1 year

⚠ IMPORTANT

The observations and prescriptions of this data sheet, although corresponding to our best experience, should be considered, in any case, purely indicative, and should be tested by exhaustive practical applications; therefore, before using the product, the user must establish whether or not it is suitable for the intended use, and assumes all liability that may arise from its use. Once the product has been handled or applied, the manufacturer shall not assume any claim whatsoever, nor any liability as to the manner, mode and conditions of application.