

Fatty Stucco

Fat stucco for glossy finish



Characteristics and usage fields

Estuco Graseo, is a ground paste ideal to perform translucent finishes as "cal rasata"; formulated to lime base, colorant earths, organic polymers, resistant alkalis and additives. The product presents an optimal adhesion above all fine support constituted of civil revokes of bastard mortar and or equivalent, bastard mortar revokes and fine troweled sand, prefabricates in cement conglomerates and compact, uniform and smooth surfaces, cardboard panels plaster, etc.

Due to its elevated alkalinity derived by the inorganic coating nature, **Fatty Stucco** is particularly resistant to mold and fungi. Moreover, its formulation, gives the product a high resistance to alkalis and atmospheric agents, as well as the easy applicability and adherence notable over all the surfaces.

Usage norms and support preparation

New revokes

Let it dry during 4 – 6 weeks, in order to neutralize the surface through its natural carbonation. Exactly the same, posterior application also has to be let mature.

New mural surfaces

Clean carefully, removing any dust, dirt or parts that are not well adhered. Check that the wall is perfectly dry and apply, in the case of very absorbent substrates, a coat of lime-based insulating and consolidating primer.

Painting surfaces or partially degrade

Eliminate any painting remain that is not adhered, as well as possible efflorescence. Clean carefully the dust and dirtiness. Control that the wall is perfectly dry and fix the surface lime base.

Technical data

Specific weight:

1.55 Kg/l + 0.10

Value del pH:

13

Dry skin:

69% + 0.10

Dilution

Ready to use

Resistant coefficient to steam water passant

Depending on the finish

Resistant to saponification:

Optimal. Mineral product.

Consumption

Over fine mortar, the consumption approximate is 0.5 kg/m².

Packaging and colors

Fatty Stucco is served in 5kg y 20 kg packages.

Colors according to chart **PAVISTAMP**.

Storage

The product has to be kept in the closed original package, in a temperature from 5 to 30oC, in a dry and ventilated place. Preserve from frosts <5oC it is preserved 1 year in closed package.

Warnings

The PH of **Fatty Stucco** is clearly basic: avoid the eyes contact using the adequate protection. On contact case, clean carefully during at least 15 minutes with water. If the irritation continues, please consult a doctor.

***Uniformity of colors by production is guaranteed.*

Fatty Stucco

Fat stucco for glossy finish

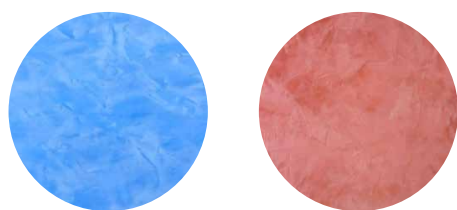
Enforcement

The product is ready to use. The greasy stucco is spread in two or more passes, inserting 24 hours between them, with a stainless-steel trowel, applying in a circular motion.

For a smooth, translucent finish, the second or third pass should be compacted to the corner of the trowel on the still wet surface. It can be applied on any type of support without capillary humidity.

Do not apply greasy stucco on very sunny surfaces, with temperatures below 5°C or above 40°C. In the first 24 hours after application, protect the treated surface from rain for at least 48 hours.

Clean tools with water immediately after use.



Packaging

5kg y 20 kg packages.

Color

Colors according to chart PAVISTAMP.

Consumption

Approximate 0.5 kg/m²

Preservation

The product has to be kept in the closed original package, in a temperature from 5 to 30°C, in a dry and ventilated place. Preserve from frosts <5°C it is preserved 1 year in closed package.



⚠ IMPORTANT

The observations and prescriptions of this technical sheet, even corresponding to our best experience, should be considered, in any case, purely indicative, and must be tested by exhaustive practical applications; Therefore, before using the product, whoever is going to do it must establish whether or not it is suitable for the intended use, and assumes any responsibility that may arise from its use. Once the product is handled or applied, the manufacturer will not assume any claim, nor will it be responsible for the form, mode and conditions of application.