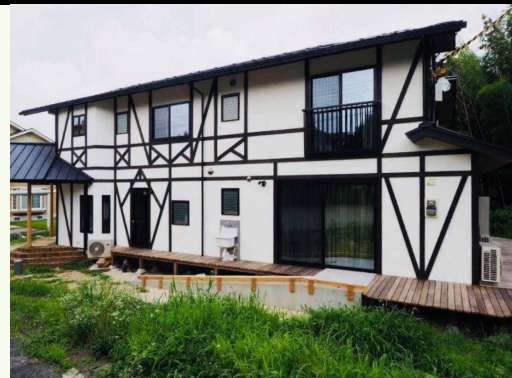


Revex-cal fine

Lime mortar in fine layer 2-3 mm

High calcium hydrated lime, calcium carbonates crystalized and inorganic pigments.



Properties

- Ecologic and natural 100%
- Properties fungicides and bactericidal
- Natural water repellent 100%
- Permeable to water steam and breathable

Observations

- Do not add any additive to the mortar.
- On absorbent or porous surfaces and in a strong heat season moisten before applying the product.
- Treat the singular zones (fissures...) with glass fiber mesh.
- Do not apply directly over brick enclosure, concrete block ...
- The dry time will oscillate depending on the existing temperature and humidity.

Characteristics

- Mixture life: 2 - 3 hours
- Open time: 2 hours
- Minimum thickness finish: 2 - 3 mm
- Touch dry: 4- 6 hours

**These times can considerably oscillate depending on the ambient temperature.*

Performances

- Dust density: 1044 gr.
- Kneading water (in laboratory): 32%
- Density in mass: 1658 gr.
- Behavior against fire: Euroclass A1

**These results have been obtained in standard conditions and they can oscillate depending on the workplace conditions. .*

Enforcements

- Ecologic mortar, for revoke and termination in thin layer 2 – 3 mm, in which mortar identical to the originals are required, with characteristics and old patinas.
- Indoors and outdoors.
- Excellent fineness and thyrotrophic.

Supports

- Over lime mortar base (other mortar kind, consult).

Recommendations

- Application temperatures 5°C to 35°C
- Respect always the same water percentage during the mixture.
- Do not add water to the product after the kneading.
- Respect the existing base expansion joints, mortar, ceramic...
- Do not apply with rain risk, frost risk, with direct insolation, strong wind...

Revex-cal fine

Lime mortar in fine layer 2-3 mm

Execution conditions

- Clean the support eliminating any dust remains, liquids, spillings, etc. In addition, eventual efflorescence wastes must be eliminated and any other substance that can damage a good adherence to the support.
- The support base will be made of lime mortar and will present a surface with good stable and rough planimetry.
- Avoid applying the mortar at low temperatures, risk of rain or possibility of freeze-thaw.
- Avoid application with direct sunlight.

Usage way

- Mixture ratio: 8-8,5 clean water liters per sack 25kg. approx.
- Mix the product with water until obtaining a homogeneous and ready to use mass.
- Apply a fine layer over the lime mortar support, extending with spatula or steel trowel in a compact way and without irregularities, carefully levelling the surface.
- Once the necessary hardening of the applied layer has been reached (1 - 2 hours), pass with a sponge trowel until the desired finish is achieved. For a fine finish, subsequently pass a steel trowel.

** The times can considerably oscillate depending on the ambient temperature.*

**REVEX-CAL
FINO**

**MORTERO ECOLÓGICO
PARA REVOCO EN CAPA
FINA 2 - 3 MM**

Pavistamp®

Packing

25 kg sacks - 1200 kg pallet (48 sacks)

Color

White. Others on demand.

Consumption

1.2 - 1,5 kg/m² and mm thickness

* These consumptions can oscillate depending on the support and the coats number

Preservation

It contents hydraulic lime (setting with humidity)

References

On 100% lime mortars and mixed mortars



! IMPORTANT

The observations and prescriptions of this technical sheet, even corresponding to our best experience, should be considered, in any case, purely indicative, and must be tested by exhaustive practical applications; Therefore, before using the product, whoever is going to do it must establish whether it is suitable for the intended use, and assumes any responsibility that may arise from its use. Once the product is handled or applied, the manufacturer will not assume any claim, nor will it be responsible for the form, mode and conditions of application.