

Pavistamp®

Pertenecientes a:

AEPC
ASOCIACIÓN ESPAÑOLA DE
PAVIMENTOS CONTINUOS

Stamped Concrete

Color Chart



www.pavistamp.com

P



SYSTEM

Stamped Concrete

Colored mortar for stamped concrete

About Stamped Concrete:

Stamped concrete can be applied in two ways: with additive or with mortar, depending on the type of project. Additive is applied on fresh concrete, while mortar is used when there is no height available over stable and compact concrete, or in renovation works.

Stamped concrete can be molded to create a wearing surface with excellent hardness and durability. This high-strength product range offers different types of finishes such as stamped, smooth, brushed, or trowelled, giving the surface a unique appearance. It is made with colored additives and molds to achieve the desired pattern. It is suitable for moderate traffic areas such as garages, parking lots, streets, or terraces, with great durability against weather conditions. We also offer an HD variant, resistant to freeze-thaw cycles with salt immersion, without degradation caused by saline attack.

Products that may be involved in the execution of stamped concrete:

- In the additives family we offer several products and grades:
Pavistamp, Padec and Impreso
- In fluid mortars:
Pavifluid and Pavifluid HD
- Release agents:
Despi and Desmol
- In sealing resins:
Racly, F300, F250
- Auxiliary products:
Fibers, protectors, retarders, etc.





Stamped Concrete

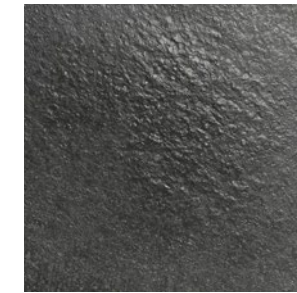
Color chart



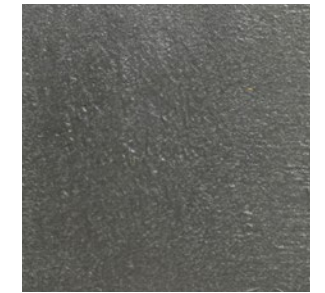
Negro



Industrial Negro



P-85 | Pizarra



Ceniza



Arena 96



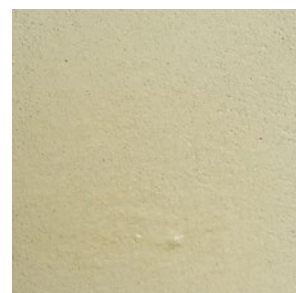
P-185 | Galaico



P-25 | Gris medio



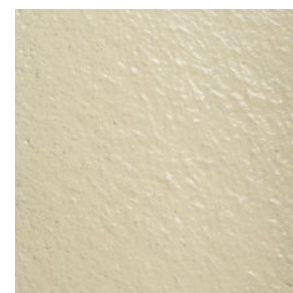
Gris Claro



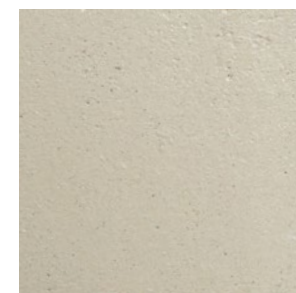
P-481 | Beige



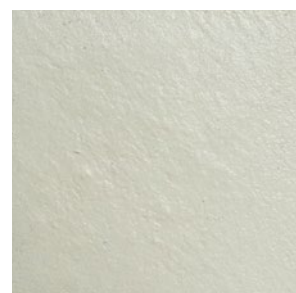
P-113 | Crema



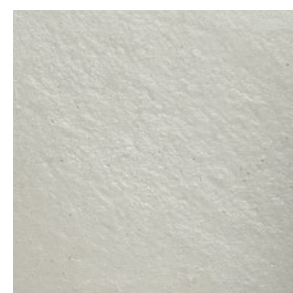
P-119 | Ton Pierre



P-147 | Ivorie



Piedra



P-109 | Perla



Tierra



Arena 2





Rojo intenso



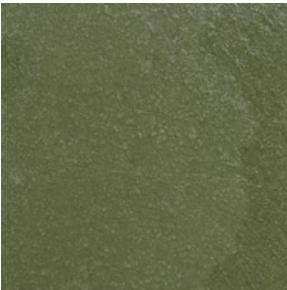
Rojo Alicante



Burdeos



P-115 | Chamois



Verde oscuro



Industrial verde GN



Amarillo intenso



P-135 | Arena



STAMPED CONCRETE

Application method

Steps to follow when applying the mortar

- 1

Pour concrete with the right consistency
- 2

Level the concrete
- 3

Flatten with a bull float, allowing water to rise by capillarity
- 4

Apply the additive for the wearing layer, first pass
- 5

Finish the edges with an edger
- 6

Smooth to ensure adhesion of the additive to the concrete and create the wearing layer
- 7

Apply a second pass and smooth the additive to complete the wearing layer
- 8

Apply release agent
- 9

Place the stamping molds
- 10

Wash the pavement
- 11

Apply resin to the stamped concrete



floors



UV resistant



outdoors



high traffic



commercial & residential use



non-slip



Pavistamp®

CIA Española de Hormigones Estampados, S.L.
Av./ Columbretes, 6. Planta 10, Pt. 16.
12594. Oropesa de Mar. (Castellón) Spain | Spain

T.: +34 977 450 717
E.: pavistamp@pavistamp.com
W.: www.pavistamp.com

Fábrica | Production Plant
Pol. Ind. Cataluña Sud, 14-1
43500. Tortosa. (Tarragona) Spain | Spain

Showroom | Trainning Center
Pol. Ind. Mas Roig, 3. Parc. 50
43896. L'Aldea. (Tarragona) Spain | Spain