

SYSTEM

Micropool

Infinity pools with a unique and comfortable aesthetic aspect.
Places with designs demanding to regulations.

Technical information

01 | PRESCRIPTION

02 | TECHNICAL DATA SHEETS

- Ecopox Cem Plus 3C
- Micropool Coarse
- Micropool Fine 3C
- Veladura
- Orfapol Plus Transparent
- Orfapol 50
- Water Repellent 6772

03 | PERFORMANCE DECLARATION

P R E S C R I P T I O N

Micropool Pool System

m2 CONTINUOUS SMOOTH COATING FROM 2 to 3 mm THICKNESS, INTERIOR AND EXTERIOR FOR HIGH WEAR RESIS- TANCE, ESPECIALLY POOLS.

Supply and formation of smooth continuous coating approximately 2 to 3 mm thick, carried out on concrete, ceramic, terrazzo surfaces and with humidity by capillary rise up to a maximum of 2.5 atm by negative pressure, by applying successive layers: layer of **Ecopox Cem Plus 3C** with fiberglass mesh (tricomponent mortar for regularization of supports and vapor barrier) from Pavistamp Company or similar according to D.F, two layers of **Micropool Coarse** (decorative coating based on water-based polyurethane) from Pavistamp Company firm or similar according to D.F, two layers of **Micropool Fine 3C** (water-based polyurethane decorative coating) from Pavistamp Company firm or similar according to D.F application of **Veladura** (water-based polyurethane gel) from Pavistamp Company firm or similar according to D.F In order to accentuate the water or flat application, the entire system is sealed with **Orfapol Plus Transparent** (solvent-based polyurethane) from the Pavistamp Company or similar according to D.F. following the manufacturer's instructions.

If it were the case to carry out an anti-slip treatment, this polyurethane must be mixed with glass microspheres creating a protective seal with high resistance to wear following the manufacturer's instructions.

The concrete supports must be solid, dry (completely set if they are new construction 28 days), level, absorbent, and not contaminated with oils, detergents, powders or other substances.



P R E S C R I P T I O N

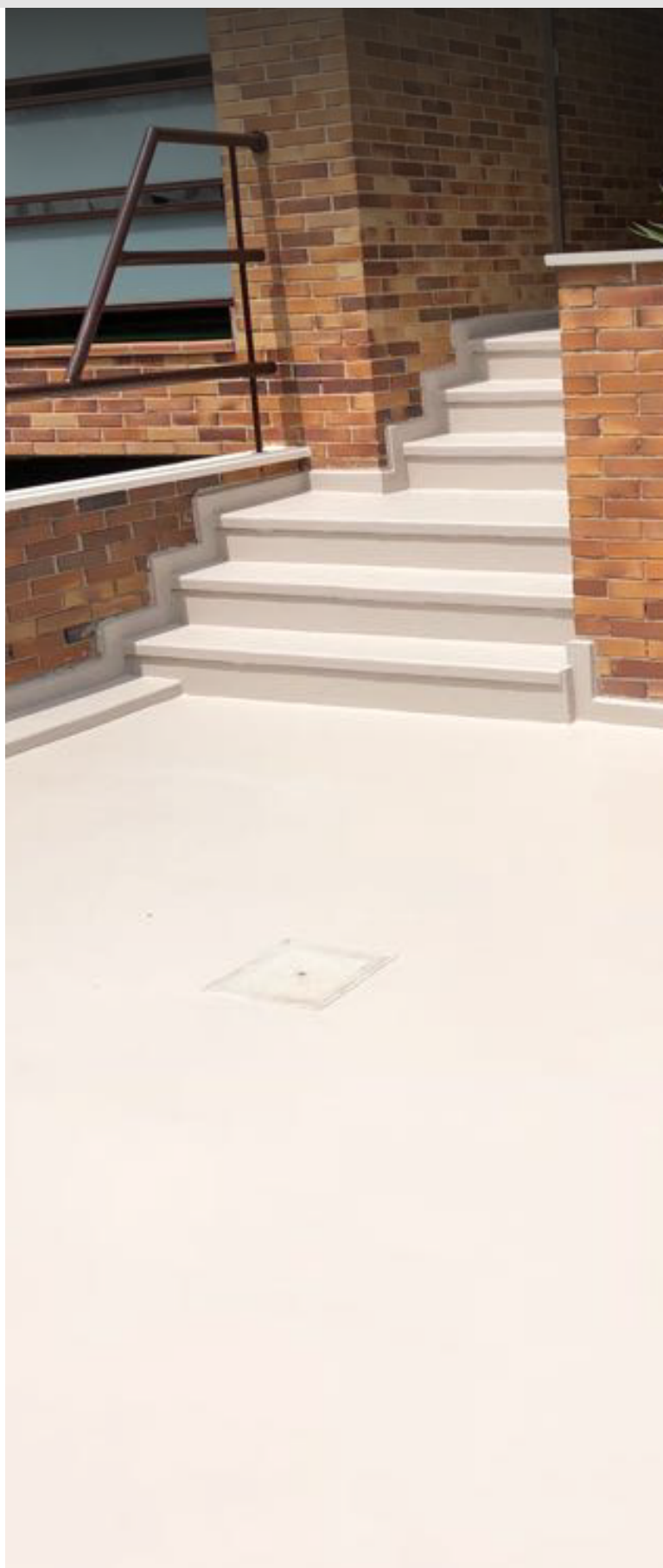
Micropool Pool System

m2 CONTINUOUS SMOOTH COATING 2 to 3 mm THICK, FOR AUXILIARY AREAS, SOLARIUMS, BATHROOMS, SHOWERS, TERRACES WITH HIGH WEAR RESISTANCE.

Supply and formation of smooth continuous coating approximately 2 to 3 mm thick, carried out on concrete, ceramic, terrazzo surfaces and with humidity by capillary rise up to a maximum of 2.5 atm by negative pressure, by applying successive layers: three layers of **Ecopox Cem Plus 3C** with fiberglass mesh (tricomponent mortar for regularizing supports and vapor barrier) from Pavistamp Compañía or similar according to D.F, three layers of **Micropool Fine 3C** (water-based polyurethane decorative coating) of the firm Pavistamp Company or similar according to D.F application of a layer of **Veladura** (water-based polyurethane gel) from the firm Pavistamp Company or similar according to D.F with the purpose of accentuating the water or smooth application, the entire system is sealed with **Orfapol 50** (water-based polyurethane), **Water Repellent 6772** (water-based water repellent) **Orfapol Plus Transparent** (solvent-based polyurethane) from the firm Pavistamp Compañía or similar according to D.F following the manufacturer's instructions and depending on the type of finish selected.

If it were the case to carry out a non-slip treatment to comply with current regulations as stated in section DB SUA-1 (Basic Documents for Safety of Use and Accessibility: Safety against the risk of falls) of the CTE (Technical Code of Building) and thus provide a class C0, C1, C2 or C3 pavement, this polyurethane must be mixed with glass microspheres creating a protective seal with high resistance to wear and slipperiness following the manufacturer's instructions.

The concrete supports must be solid, dry (completely set if they are new construction 28 days), level, absorbent, and not contaminated with oils, detergents, powders or other substances.



TECHNICAL DATA SHEETS

Micropool System



- ECOPOX CEM PLUS 3C



- MICROPOL COARSE



- MICROPOL FINE 3C



- VELADURA



- ORFAPOL PLUS TRANSPARENT



- ORFAPOL 50



- WATER REPELLENT 6772



Ecopox CEM Plus 3C

Epoxy tricomponent mortar - Steam barrier (A+B+C)

Primer and vapor barrier for resin coatings



Description

Three-component product (A+B+C) based on epoxy resin modified with aluminized additives to make an osmotic barrier and / or waterproofing membrane.

Performances

- Specific weight: 1.50 ± -0.05 g / ml
- Residual dry: 90% by weight
- Flash point: not applicable

**These results are from standard tests and may vary depending on the conditions of commissioning.*

Uses

- Binding layer and regularization of concrete surfaces.
- Primer for resin coatings and floors in the presence of wet substrates.
- Vapor barrier on concrete walls, brick and / or stone.
- Stucco for sealing cracks and fissures.
- Primer for coatings on slabs.
- In interiors.

Supports

- The substrate must have a minimum mechanical strength at compression of 25 N / mm² and a tensile strength of 1.5 N / mm².

Stand preparation

- The surface of the support affected by moisture must be carefully cleaned by removing paint, plaster, salts, as well as residual cement, grease, chemicals, loose particles and coatings with poor mechanical anchorage.
- On mortars with drying > 28 days.

Technical data

• Packaging	Pack A+B+C: 25 kg
• Application temperature	10-30°C y HR <75%
• Consumption (A+B+C)	0,6 – 1 kg/m ² (1 pass)
• Color	Gray cement
• Dosing components	A=100, B=50, C=100
• Pot life (50% HR)	10°C: > 3hs 25°C: >2hs 35°C: >75min
• Dry to touch (50% HR)	10°C: 20-24hs 25°C: 8-10hs 35°C: 4-6hs
• Pedestrian traffic (50% U.R.)	>24 hours (25°C)
• Adhesion to concrete	> 3,5 N/mm ² ,
• Clenaning tool	Water
• Conservation	* 6 months for component C. * 12 months for components A and B. Store in a dry place at a temperature between 5°C and 35°C and away from weather and humidity.

Ecopox CEM Plus 3C

Epoxy tricomponent mortar
Steam barrier (A+B+C)

Application

- Tri-component product: Join component **A** (Epoxy Resin) and component **B** (hardener) in the bucket, mixing with a whisk at low revolutions for approximately 2 minutes. Then add component **C** (special cement) and mix for 2 more minutes.
- Dilute with 15% by weight with clean fresh water and apply with a suitable trowel, the consumption is approximately 0.6 to 1 kg/m² for each application.
- Before proceeding with the coating, wait 24 hours (at 25°C and 50% relative humidity), check that the hygrometer is completely dry. In case of results indicating the presence of humidity, apply additional coats of **Ecopox-cem plus 3C**, until complete drying.

Usage way



Mix components **A + B** with a whisk at low speed for at least 2 minutes, add component **C** and mix for a further 2 minutes, until a perfect homogenization is achieved.



The application can be made with steel trowel, rubber...



Packaging

Pack A+B+C: 25 kg

Color

Gray cement

Consumption

0,6 – 1 kg/m² (1 pass)

Conservation

6 months for component C.

12 months for components A and B.

Store in a dry place at a temperature between 5°C and 35°C and away from weather and humidity.

! IMPORTANT

The observations and prescriptions of this data sheet, although corresponding to our best experience, should be considered, in any case, purely indicative, and should be tested by exhaustive practical applications; therefore, before using the product, the user must establish whether or not it is suitable for the intended use, and assumes all liability that may arise from its use. Once the product has been handled or applied, the manufacturer shall not assume any claim whatsoever, nor any liability as to the manner, mode and conditions of application.

Micropool Coarse[®]

Decorative and industrial mortar
water based (A+B+C)



Description

Coarse-grained three-component mortar based on water-based resins.

- High adhesion on resin coatings.
- Excellent mechanical resistance.
- High resistance to abrasion.
- Excellent resistance to UV rays and atmospheric agents.
- In interiors and exteriors.

Performances

- Specific gravity (25°C): 180+ / -0,05g/ml
- Viscosity (25°C): Thixotropic paste.
- Dry residue: 84.3% by weight and 50% RH.

**These results are from standard tests and may vary depending on the conditions of use.*

Technical data

• Packaging	Pack A+B+C: 25 kg
• Application temperatures	10-30°C and RH <75%.
• Consumption (depending on aggregate size)	0,3 - 1 kg/m ² (1 pass)
• Colour	Colours
• Dosage of components	A=100, B=50, C=100
• Pot-life (50% R.U.)	10°C: > 3 hs. 25°C: >2 hs. 35°C: >75 min.
• Dry to touch (50% R.U.)	10°C: 20-24 hs. 25°C: 8-10 hs. 35°C: 4-6 hs.
• Pedestrian (50% R.U.)	>24 hours (25°C)
• Adhesion to concrete	> 2 N/mm ²
• Tool cleaning	Water
• Preservation	** 6 months for component C. **12 months for components A and B. Store in a dry place at a temperature between 5°C and 35°C and away from weather and humidity.

Applications

- Base coating of the Micropool system for interior or exterior surfaces.
- Coloured floor and wall coverings.

Support

- The support must have a minimum mechanical resistance to compression of 25 N/mm² and to traction of 1.5 N/mm².

Preparation of the support

Concrete substrates must be solid, dry, level, absorbent, not contaminated with oils, detergents, dusts or other substances.

On new concrete with a setting time of >28 days.

Evaluate the most suitable type of mechanical preparation (using an abrasive machine, polishing machine or hydro-cleaner) and apply a coat of **Paviplast epoxy**.

Important

Colours with shades of yellow, orange or some red may require further applications to achieve a good coating effect (in some cases a first white recovery is recommended). Several production batches may have small colour differences: if possible use material from only one production batch.

Some colours based on organic pigments (reds, blues, greens and intense yellows) tend to fade when subjected to abrasion (either dry or wet). In these cases it is advisable to protect the colour with a coat of transparent **Paviplast epoxy** finish.

Micropool Coarse®

Decorative and industrial mortar
water based (A+B+C)

Application

Prepare the mixture of the 2 components **A + B**, pour the contents of component **B** into the container of component **A**, stir the mixture and add component **C**, homogenise with a whisk at low revolutions. Apply the product with a suitable trowel at an approximate consumption of 0.3 - 0.5 kg/m² (1 pass).

To colour the product use water-based dyes, the quantity of dye in relation to the product can vary from 3 % to 10 %, depending on the desired colour effect.

Usage way



Mix components **A + B** with a whisk at low speed for at least 1 minute, until perfectly homogenised. Add component **C** and stir again.



The application can be carried out with a steel trowel, rubber...

Associated products

*Paviplast Epoxy



Packaging

Pack A+B+C: 25 kg

Color

Colors

Consumption

0,3 – 1 kg/m² (1 layer)

Preservation

** 6 months for component C.

**12 months for components A and B.

Store in a dry place at a temperature between 5°C and 35°C and away from weather and humidity.

! IMPORTANT

The observations and prescriptions of this data sheet, although corresponding to our best experience, should be considered, in any case, purely indicative, and should be tested by exhaustive practical applications; therefore, before using the product, the user must establish whether or not it is suitable for the intended use, and assumes all liability that may arise from its use. Once the product has been handled or applied, the manufacturer shall not assume any claim whatsoever, nor any liability as to the manner, mode and conditions of application.

Micropool 3C®

Decorative and industrial water-based mortar (A+B+C)



Characteristics

- Great adhesion on resin coatings
- Excellent mechanical resistance.
- Abrasionhighresistance.
- Excellent resistance to UV rays and atmospheric agents.
- Indoors and outdoors

Performances

- Specific gravity (25°C): 180+ / -0,05g/ml
- Viscosity (25°C): Thixotropic paste
- Dry residue: 84.3% by weight and 50% HR.

**These results are from standard tests and may vary depending on the conditions of commissioning.*

Technical data

- | | |
|-------------------------------|---|
| • Packaging | Pack A+B+C: 25 kg |
| • Application temperatures | 10-30°C and HR <75% |
| • Consumption | 0,3 – 1 kg/m² (1 pass and depending on the size of the aggregate) |
| • Color | Neutral (colors) |
| • Dosign of components | A=100, B=50, C=100 |
| • Pot life (50% HR) | 10°C: >3 h 25°C: >2 h 35°C: >75min |
| • Dry to touch (50% HR) | 10°C:20-24 h 25°C:8-10 h 35°C:4-6h |
| • Pedestrian traffic (50% HR) | >24 h (25°C) |
| • Adhesion to concrete | > 2 N/mm2 |
| • Cleaning tool | Water |
| • Conservation | ** 6 months for component C.
*** 12 months for components A and B. |

Store in a dry place at a temperature between 5°C and 35°C and protected from the elements and humidity.

Important

- Colors with shades of yellow, orange or some red may require more applications to achieve a good coating effect (in some cases a first white color recovery is recommended).
- Several production batches may have small color differences: if possible use material from a single production batch.
- Some colors based on organic pigments (reds, blues, greens and intense yellows) tend to fade when subjected to abrasion (either dry or wet). In these cases it is advisable to protect the color with a coat of transparent **Paviplast Epoxy** finish.

Applications

- Spatuled effect coating for exterior surfaces.
- Light-colored pavements and coatings.

Support

- The support must have a minimum mechanical strength at compression of 25 N/mm2 and at traction of 1.5 N/mm2.

Stand preparation

- The concrete supports must be solid, dry, level, absorbent, Not contaminated with oils, detergents, powders o other substances.
On new concrete of setting >28 days.
Evaluate the most convenient type of mechanical preparation (using abrasive, polishing or hydro-cleaning machine) and apply one pass of **Paviplast Epoxy**.

Micropool 3C[®]

Decorative and industrial
water-based mortar (A+B+C)

Application

- Prepare the mixture of the 2 components **A + B**, pour the content of component **B** into the container of component **A**, shake the mixture and add component **C**, homogenize with a mixer at low revolutions.
- Apply the product with the appropriate trowel at an approximate consumption of 0.3 - 0.5 kg/m² (1 pass).
- To color the product, use water-based colorants, the amount of colorant with respect to the product can vary from 3% to 10%, depending on the desired color effect.

Usage way



Mix components **A + B** with a mixer at low revolutions for at least 1 minute, until obtaining a perfect homogenization and add component **C** and mix again.



The application can be made with steel trowel, rubber...

Associated products

*Paviplast Epoxy



Packaging

Pack A+B+C: 25 kg

Color

Neutral (colors)

Consumption

(1 pass and depending on the size of the aggregate)
0.3 - 1 kg/m²

Preservation

*6 months for component C.
* 12 months for components A and B.

Store in a dry place at a temperature between 5°C and 35°C and protected from the elements and humidity

! IMPORTANT

The observations and prescriptions of this data sheet, although corresponding to our best experience, should be considered, in any case, purely indicative, and should be tested by exhaustive practical applications; therefore, before using the product, the user must establish whether or not it is suitable for the intended use, and assumes all liability that may arise from its use. Once the product has been handled or applied, the manufacturer shall not assume any claim whatsoever, nor any liability as to the manner, mode and conditions of application.

Veladura

Polyurethane gel water based

One-component, easy-to-use product, based on dispersion of polyurethane in aqueous vehicle.



Properties

- Good mechanical resistance
- High abrasion resistance
- Excellent adhesion
- Resistant to solvents

Uses

- Can be used to obtain vapor permeable coatings.
- As a fine finish in decorative wall coatings.
- By the evaporation of the water, the product is transformed into a continuous film with very good adhesion to the substrate.

Performances

- Specific weight (25°C): 1,00+ / -1,05 g/ml
- Viscosity (25°C): 10.000+ / 2.000 MPa
- Dry residue: 40% in weight

*These results are standard test results and may vary depending on site conditions.

Support preparation

Concrete substrates must be solid, dry (completely set if newly constructed), level, absorbent, not contaminated with oils, detergents, powders or other substances. Apply the most suitable type of mechanical preparation, using an abrasive or polishing machine or hydro-cleaner.

Apply the product on the prepared base with **Micropool 2C** or **Decopox**.

Enforcement

- Pigment the product with **Veladura dye** and homogenize with the use of a low speed drill mixer.
- Apply the material with a trowel.
- Avoid creating very thick films.
- It can generate delays in the development of the final characteristics of the same, specifically deep drying and sensitivity to water.

Usage way

Mix the product + **Veladura dye** with a mixer at low revolutions for at least 2 minutes, until a perfect homogenization is obtained.

The application can be done with a steel or rubber trowel.



Technical data

- | | |
|---------------------------|--|
| • Operating temperatures | 15-30°C y H.R. <75% |
| • Consumption | Aprox. 0,1 kg/m ² (1 layer) |
| • Packing | 1kg - 10 kg |
| • Color | Colorless (colors) |
| • Flash point | Not applicable |
| • Pot-life (50% H.R.) | Monocomponent |
| • Dry to touch (50% H.R.) | 10°C: 120-180 min 25°C: 40-60 min |
| | 30°C: 15-30 min |
| • Pedestrian 50% H.R.) | 25°C: >18 hours |
| • Repainting (50% H.R.) | 25°C: >90 min |
| • Diluent | Water |
| • Tool cleansing | Water / Ethyl alcohol |
| • Storage | Original closed container (5-35°C),
protected from weather and humidity: 1 year |

Associated products

- *Decopox
- *Micropool 2C
- *Veladura tint

! IMPORTANT

The observations and prescriptions of this data sheet, although corresponding to our best experience, should be considered, in any case, purely indicative, and should be tested by exhaustive practical applications; therefore, before using the product, the user must establish whether or not it is suitable for the intended use, and assumes all liability that may arise from its use. Once the product has been handled or applied, the manufacturer shall not assume any claim whatsoever, nor any liability as to the manner, mode and conditions of application.

Orfapol plus transparent®

Solvent based aliphatic polyurethane paint (A+B)

Product based on aliphatic polyurethane resins (solvent base).



Product

- Good wear resistance
- No yellow
- Excellent resistance to UV rays
- Indoor and outdoor
- Painting of concrete pavements

Applications

- Painting of concrete pavements.
- Finishing for resin coatings.
- Anticorrosive treatment for structures in concrete and steel.
- Anti-dust impregnation of concrete constructions and their derivatives.
- Painting of workshops and battery depots
- Indoors and outdoors

Performances (25°C)

- Humidity in the support: 0%
- Viscosity: 30-40 Mp (spindle 1, rpm 100)
- Specific weight: 0.95 ± 1.00 g / ml
- Point of inflammation: >100°C
- Residue: 51% by weight
- Maximum relative humidity: 50%

**These results are from standard tests and may vary depending on the conditions of commissioning.*

Technical data

• Packaging	Pack (A+B): 10 kg
• Application temperature	10 - 30°C and HR <60%
• Consumption	0,1 – 0,15 kg/m ² (1 pass)
• Color	Transparent
• Dosage (A+B+C)	Weight and volume: A=79 – B=21
• Pot life (50% HR)	7°C: >6 hs 25°C: >3hs 35°C: >2hs
• Dry to the touch (50% HR)	7°C: 24-28hs 25°C: 8-10hs 35°C: 3,5-5,5 hs
• Repainting (50% H.R.)	12-36 hs (25°C)
• Maintenance and cleaning	With neutral detergents
• Preservation	In original closed container (5-35°C), protected from weather and humidity: 1 year. *Component B, sensitive to humidity.

Application

- Join the 2 components **(A+B)** and mix with low-speed mixer
- drill for 1 minute.
- Apply the mixture with roller or brush, approximate consumption: 0,01 – 0,15 kg / m².
- To obtain a rough and non-slip surface, at the time of preparation of the 2 components, add between 5-10% quartz
- and 3-5% glass microspheres.
- In the case of coatings in continuous contact with acids, it will be necessary to over catalyze the system with a 30% increase in part **B** compared to standard dosages

Support preparation

- Concrete bottoms should be solid, dry, level, absorbent, non-contaminated with oils, detergents, powders, or other substances.
- On substrates with possibility of humidity by capillary lift, apply **Ecopox-cem plus 3C** (osmotic barrier).
- The type of mechanical preparation most convenient to apply (abrasive or sanding) should be evaluated.
- Existing voids and minor anomalies can be repaired with **Pavirapid** or **Pavex-2C mortar**.
- Slab pavements must be sanded or roughened until a completely opaque surface is obtained that must be treated with a primer of **Polyurethane Primer**.
- Resin coatings should be sanded vigorously, and dust residue should be removed.
- Metal surfaces must be mechanically cleaned and treated with a type of background: **Anti-Corrosive Primer**.

As finishing of resin coatings, it is necessary to proceed to the application verifying the coating time of the previously applied product.

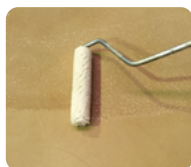
Orfapol plus transparent®

Solvent based aliphatic polyurethane paint (A+B)

Usage way



Mix the components **A + B** with a whisk at low revolutions for at least 1 minute, until a perfect homogenization is achieved.



The application can be made with airless, brush, roller...

Between layers, at least a minimum of 4 hours and a maximum of 24 hours must pass. If this maximum is exceeded, a preliminary sanding of the surface will be carried out.

**If a light surface veil appears after drying, clean the surface with soap and water.*

Associated products

- *Ecopox CEM plus 3C
- *Pavirapid
- *Pavex-2C mortar
- *Microspheres
- *Quartz



Packaging

Pack (A+B): 10 kg

Color

Transparent

Consumption

0,1 – 0,15 kg/m² (1 pass)

Conservation

In closed original container (5-35 ° C), sheltered from the weather and humidity: 1 year

*Component B, sensitive to air humidity

⚠ IMPORTANT

The observations and prescriptions of this data sheet, although corresponding to our best experience, should be considered, in any case, purely indicative, and should be tested by exhaustive practical applications; therefore, before using the product, the user must establish whether or not it is suitable for the intended use, and assumes all liability that may arise from its use. Once the product has been handled or applied, the manufacturer shall not assume any claim whatsoever, nor any liability as to the manner, mode and conditions of application.

Orfapol 50®

Polyurethane water resin

Two components polyurethane resin in water base, with polyisocyanate polymers and additives.



Product

- Excellent adherence.
- Highlights the color.
- Great resistance to abrasion.
- Indoors and outdoors.

Characteristics

- Over a completely clean, dry and without dust and grease base...
- Mixture proportion in parts:
 - **10 parts Component A
 - **1 part Component B
- Application temperatures: 10°C and 25°C.
- Relative humidity: <80%
- Over cement base with humidity < 4 %.
- Mixture life: 2 hours
- Opening time: 40-50 minutes
- Minimum drying time: 2 hours, maximum 24 hours.
- Avoid application with direct insolation, strong wind, rain risk, frost...
- Do not apply **Orfapol-50** with capillary rising humidity possibility.

** These times are contemplated with 20°C and they can oscillate depending on the ambient temperature.*

Performances

- Density: 1,00 – 1,05 g/ml 25°C
- Flashpoint: Not applicable
- Recommended diluting: Water

Enforcements

- Resin cured in water base for wall and floor protection.
- Waterproof and breathable.
- Excellent color highlighter.
- Does not get stained.
- Facilitate lower dirtiness retention.
- Indoors and outdoors.

Supports

- Concrete, mortar, wood, **Pavistamp floor**, Microcement.

Orfapol 50[®]

Polyurethane water resin

Usage way

Over a completely clean, dry and without dust and grease base...

With roller, pistol, airless. Sand the surface to facilitate the adhesion.

Spill components **A+B** in the same recipient and mix carefully with mechanical shaker. Let it rest during 10 minutes.

Apply without overloading, waiting at least 45-60 minutes between layers. Avoid a too thick layer as it could delay the final characteristics product development (Through drying and water resistance).

It can be diluted to 100% with water.

Associated products

*Floors and walls



Packing

Silky – Matt: pack (A + B) of 5.5 and 11 kg packages
Bright: pack (A + B) of 5 kg

Colors

Standard: transparent
(others on demand)

Appearance

Silky – Matt – Bright

Consumption

±0.1 kg/m² (5 kg= 50m²) y según soporte

Preservation

12 months from the fabrication date, in the closed original package and sheltered from outdoor and humidity.

⚠ IMPORTANT

The observations and prescriptions of this data sheet, although corresponding to our best experience, should be considered, in any case, purely indicative, and should be tested by exhaustive practical applications; therefore, before using the product, the user must establish whether or not it is suitable for the intended use, and assumes all liability that may arise from its use. Once the product has been handled or applied, the manufacturer shall not assume any claim whatsoever, nor any liability as to the manner, mode and conditions of application.

Water Repellent 6772

Water-repellent oleofugant

Compound by Fluorinated Silane-Siloxane in water solution for the construction material treatment giving a finish repellent to water and oils.



Product

- Repellent to water and oils effect.
- Does not modify the existing color.
- Avoid efflorescences
- Breathable.
- Mortars, marble, stone, clinker brick.

Enforcements

- Excellent penetration.
- Avoid the stains appearance.
- To be used for the water-repellent and oleofugant of materials **Stone feel**
- – **Stylfloor – Pavistamp floor**, Pavicem, marble, natural stone, granite, mortars, brick...
- Permeability to water steam.

Usage way

***Always perform tests before using the product**

***Dilute with water;**

1 part of **Water-repellent 6772** / 7-14 water parts.

- In recently worked surfaces, wait at least 30 days, before proceeding to the treatment.

- Apply 1-2 pass with mop, airless, conventional spray..., after 8 hours (minimum), proceed with the brightening machine ultra quick until obtaining the more uniform to the support finish

- Generally, an only pass is enough, over porous surfaces, if it was necessary, a second pass can be applied when the brightness effect of the first one disappears.

- Avoid direct insolation.

**All the information described has been obtained with standard essays and can oscillate depending on the workplace conditions and the absorption of each product to be treated.*

Observations

- The support must be dry, healthy, clean and without dust.
- Avoid splashes in the eyes, mucous and skin contact
- Use protection glasses and gloves.
- Protect all the surfaces that are not going to be waterproofed and/or supports that are not concretely cementitious.

Performances

- Active material: 45%
- Flashpoint: > 100°C
- Viscosity (to 25°C): < 50 mPas (cP)
- Density (a 25°C): approx. 1.1 g/cm
- Diluting: water

! IMPORTANT

The observations and prescriptions of this technical sheet, even corresponding to our best experience, should be considered, in any case, purely indicative, and must be tested by exhaustive practical applications; Therefore, before using the product, whoever is going to do it must establish whether it is suitable for the intended use, and assumes any responsibility that may arise from its use. Once the product is handled or applied, the manufacturer will not assume any claim, nor will it be responsible for the form, mode and conditions of application.



Packaging

5 kg drum
360 kg pallet (72 drums)

Colors

Milky white

Consumption

(once diluted)

1kg: between 5-25 m2 / 1 pass and depending on support

Preservation

(5- 25°C)

In the closed original container and sheltered from outdoors and humidity: 6 months

Associated products

Stone feel - Stylfloor - Terrazo
Pavistamp floor - Micro cement

PERFORMANCE DECLARATION CPF

Micropool System

In accordance with the European Construction Products Construction Products Regulation (CPR) No 305/2011

- 1 • Product name:
MICROPOOL SYSTEM 3C
- 2 • Product type: **Water-based epoxy mortar with silica and aluminium silicate fillers.**
- 3 • Intended use(s): **For interior and exterior, horizontal and vertical coatings on pavements, facades and swimming pools.**

- 4 • Name and address of manufacturer: **Cía. Española de Hormigones Estampados, S.L.**
| Pol. Ind. Catalunya Sud 14-1, 43500 - Tortosa (Tarragona) Spain - www.pavistamp.com
- 5 • System for the evaluation and verification of the constancy of benefits: **System 3**
- 6 • Notified Body: **Factory production control (FPC) and initial type testing is performed under system 3.**
- 7 • Declared benefits:

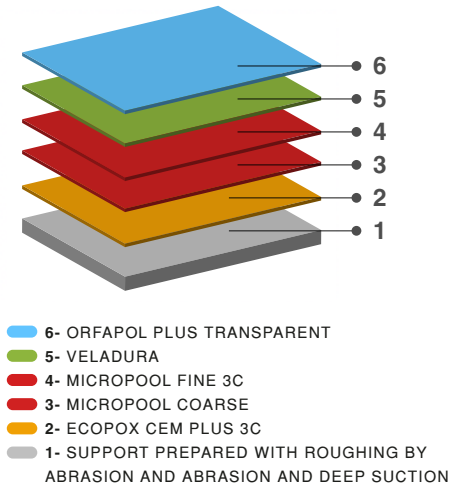
CHARACTERISTICS	TEST METHOD	BENEFITS	REQUIREMENTS
Böhme wear resistance	UNE-EN 13892-3:2003	15,9 cm3 /50 cm2	UNE-EN 13813:2014
Surface hardness	UNE-EN 13892-6:2003	84 N/mm2	UNE-EN 13813:2014
Impact resistance	UNE-EN ISO	>16,7 Nm	At 1500 mm WITHOUT defects Diameter of crater: 8.0 mm
Adhesion resistance	UNE-EN:2003 13892-8	2,8 MPa	UNE-EN 13813:2014
Determination of slip/slip resistance value of unpolished pavements	UNE-ENV 1o A(USRV)	48 (Class 3)	UNE-EN 13813:2014
Direct tensile adhesion (Pull Off)	EN-1542	2,05 MPa *	With traffic ≥2,0 MPa No traffic ≥1,0 MPa <3000mg
Abrasion resistance (1000 cycles, 1kg)	EN-ISO 5470-1	80 mg	class 1≥4Nm / Class ≥10Nm
Impact resistance	EN-ISO 6272-1	15,7 Nm (class 2)	w<0,1 kg/h0,5m2
Water vapor permeability (Aw24)	EN 1062-3	w<0,002 kg/h0,5m2	According to FDS per second
Hazardous substances		In compliance with EN 1504-2 par 5.3	

ESSENTIAL CHARACTERISTICS	BENEFITS	HARMONISED TECHNICAL SPECIFICATIONS
Capillary water absorption	0,004 g/cm2	UNE-EN 13892-2
Compressive and flexural strength	Bending: 1,5N7mm2 bending compression: 40N/mm2	UNE-EN 13892-2

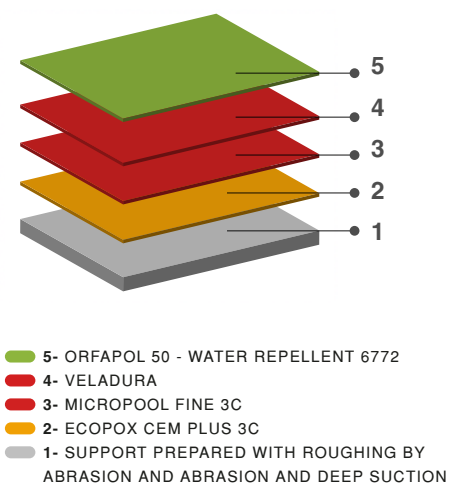
Hydrochloric acid 10 and 20%.	500 hours	Unaltered
Sulfuric acid 10 and 20%.	500 hours	Start oxid.
Distilled water	8 months	Not altered
3.5% sodium chloride	8 months	No alteration
20% sodium hydroxide	15 days	Not altered
Ammonia	3 months	Regular
Isobutyl acetate White Spirit	8 months	Not altered
Salt Fog 5% sodium chloride and 37-38oC	6 months	Good
Ambient:	8 months	Not altered
100% humidity and 40oC	3 months	Good



Micropool Pool System



Micropool System



8 • The performance of the product identified in points 1 and 2 is in conformity with the performance declared in point 7.

This declaration of performance is issued under the sole responsibility of the manufacturer identified in item 4.

Signed by and on behalf of the Manufacturer:

Asunción Codorniu
Departamentode calidad



Tortosa, 30 de Septiembre de 2020